



# Monkey Albumin ELISA Kit

Monkey Albumin ELISA Kit is an Enzyme Immunoassay kit for the quantification of Monkey Albumin in serum and plasma.

Catalog number: ARG83473

Package: 96 wells

---

For research use only. Not for use in diagnostic procedures.

## **TABLE OF CONTENTS**

<b>SECTION</b>	<b>Page</b>
INTRODUCTION .....	3
PRINCIPLE OF THE ASSAY .....	3
MATERIALS PROVIDED & STORAGE INFORMATION .....	4
MATERIALS REQUIRED BUT NOT PROVIDED .....	4
TECHNICAL NOTES AND PRECAUTIONS .....	5
SAMPLE COLLECTION & STORAGE INFORMATION.....	6
REAGENT PREPARATION.....	7
ASSAY PROCEDURE.....	8
EXAMPLE OF TYPICAL STANDARD VALUES .....	9
CALCULATION OF RESULTS .....	10

### **MANUFACTURED BY:**

Arigo Biolaboratories Corporation

Address: No. 22, Ln. 227, Gongyuan Rd., Hsinchu City 300, Taiwan

Phone: +886 (3) 562 1738

Fax: +886 (3) 561 3008

Email: [info@arigobio.com](mailto:info@arigobio.com)

### INTRODUCTION

Albumin is a family of globular proteins, the most common of which are the serum albumins. All the proteins of the albumin family are water-soluble, moderately soluble in concentrated salt solutions, and experience heat denaturation. Albumins are commonly found in blood plasma and differ from other blood proteins in that they are not glycosylated. Substances containing albumins are called albuminoids.

A number of blood transport proteins are evolutionarily related in the albumin family, including serum albumin, alpha-fetoprotein, vitamin D-binding protein and afamin. This family is only found in vertebrates. [Provide by Wikipedia: Albumin]

### PRINCIPLE OF THE ASSAY

This assay employs the quantitative sandwich enzyme immunoassay technique. A capture antibody specific for Monkey Albumin has been pre-coated onto a microtiter plate. Standards or samples are pipetted into the wells and any Monkey Albumin present is bound by the immobilized antibody. After washing away any unbound substances, added Antibody Conjugate specific for Monkey Albumin to each well and incubate. After washing away any unbound substances, the TMB substrate is added to the wells and color develops in proportion to the amount of Monkey Albumin bound in the initial step. The color development is stopped by the addition of STOP solution and the intensity of the color is measured at a wavelength of 450 nm. The

## Monkey Albumin ELISA Kit ARG83473

---

concentration of Monkey Albumin in the samples is then determined by comparing the O.D. of samples to the standard curve.

### MATERIALS PROVIDED & STORAGE INFORMATION

Store all other components at 2-8°C. Use the kit before expiration date.

Component	Quantity	Storage information
Antibody Coated microplate	1 plate	4°C
Standards (lyophilized)	1 vial	4°C
5X Diluent Buffer	50 mL (ready to use)	4°C
Antibody Conjugate	15 µl	4°C
20X Wash Buffer	50 mL	4°C
TMB substrate	12 mL (ready to use)	4°C (protect from light)
STOP solution	12 mL (ready to use)	4°C
Plate Sealer	3 adhesive strips	4°C

### MATERIALS REQUIRED BUT NOT PROVIDED

- Microplate reader capable of reading at 450 nm (620 nm as optional reference wave length)
- Deionized or distilled water
- Mixer or Ultra-Turrax
- Pipettes and pipette tips

## Monkey Albumin ELISA Kit ARG83473

---

- Multichannel micropipette reservoir
- Microtiter plate washer (recommended)

### TECHNICAL NOTES AND PRECAUTIONS

- Wear protective gloves, clothing, eye, and face protection especially while handling blood or body fluid samples.
- Store the kit at 2-8°C at all times.
- Prior to beginning the assay procedure, bring all reagents and required number of strips to room temperature (20-25°C).
- The reagent preparation method might be different from lot to lot, so please check the lot and follow the instructions given in this manual.
- Avoid air bubbles in the wells as this could result in lower binding efficiency and higher CV% of duplicate reading.
- Briefly spin down the all vials before use.
- If crystals are observed in the 20X Wash Buffer, warm to 37°C until the crystals are completely dissolved.
- Minimize lag time between wash steps to ensure the plate does not become completely dry during the assay.
- Ensure complete reconstitution and dilution of reagents prior to use.
- Take care not to contaminate the TMB Substrate. Do not expose the TMB solution to glass, foil or metal. If the solution is blue before use, DO NOT USE IT.
- Do NOT return leftover TMB Substrate to bottle. Do NOT contaminate the unused TMB Substrate. If the solution is blue before use, DO NOT USE IT.
- Change pipette tips between the addition of different reagent or samples.

## Monkey Albumin ELISA Kit ARG83473

---

- Taping the well strips together with lab tape can be done as an extra precaution to avoid plate strips from coming loose during the procedure.
- Include a standard curve each time the assay is performed.
- Run both standards and samples in at least duplicates (triplicate is recommended).

### SAMPLE COLLECTION & STORAGE INFORMATION

The following recommendations are only guidelines and may be altered to optimize or complement the user's experimental design.

**Serum:** Collect blood in a tube with no anticoagulant. Allow the blood to clot at room temperature for 30 minutes. Centrifuge at 2500 x g for 20 minutes at 4°C.

**Plasma:** Collect blood with EDTA, heparin or citrate and centrifuge at 2000 x g for 10 minutes at 4°C. Collect the plasma layer and store on ice.

#### Note:

1. Do not use haemolytic, icteric or lipaemic specimens.
2. Avoid disturbing the white buffy layer when collection serum/plasma sample.
3. Samples containing sodium azide should not be used in the assay.
4. Store all samples on ice after preparation and use immediately or aliquot and store at -80°C. Avoid repeated freeze-thaw cycles.

## Monkey Albumin ELISA Kit ARG83473

---

### REAGENT PREPARATION

- **1X Wash Buffer:** Dilute 20X Wash Buffer into distilled water to yield 1X Wash Buffer.
- **1X Diluent Buffer:** Dilute 5X Diluent Buffer into distilled water to yield 1X Wash Buffer.
- **1X Antibody Conjugate:** Dilute 100X Antibody Conjugate into 1X Diluent Buffer to yield 1X Antibody Conjugate.
- **Standards:** Reconstitute 1 vial of Standards in 1 mL distilled water to a concentration of 800 ng/mL. Then dilute in Diluent Buffer to prepare a series diluted Standards according to the table below. Do not store the diluted Standards.

Standard tube	Final Standards conc. (ng/mL)	Volume of Diluent Buffer ( $\mu$ L)	Volume of 800 ng/mL Standard ( $\mu$ L)
S1	400	500	500
S2	200	500	500 of S1
S3	100	500	500 of S2
S4	50	500	500 of S3
S5	25	500	500 of S4
S6	12.5	500	500 of S5
S7	6.25	500	500 of S6
S0	0	500	0

### ASSAY PROCEDURE

All materials should be equilibrated to room temperature (RT, 20-25°C) before use. Standards and samples should be assayed in duplicates.

1. Add **100 µL** of **samples, blank and Standards** to the **Antibody Coated microplate**. Cover the plate with the Plate Sealer. Incubate for **1 hour** at **room temperature**.
2. Aspirate each well and wash, repeating the process 3 times for a total 4 washes. Wash by filling each well with **1X Wash Buffer (300 µL)** using a squirt bottle, manifold dispenser, or autowasher. Complete removal of liquid at each is essential to good performance. After the last wash, remove any remaining Wash Buffer by aspirating, decanting or blotting against clean paper towels.
3. Add **100 µL** of the **1X Antibody Conjugate** per well. Then cover the plate with the Plate Sealer. Incubate for **30 min** at **room temperature**.
4. Aspirate and wash plate as in step 2.
5. Add **100 µL** of **TMB Substrate** to each well, including the blank wells. Incubate for **7- 15 minutes** at **room temperature** in the dark.
6. Immediately Add **100 µL** of **Stop Solution** to each well, including the blank wells. The color of the solution should change from blue to yellow.
7. Read the OD with a microplate reader at **450 nm** immediately. (optional: read at 620 nm as reference wavelength) It is recommended reading the absorbance **within 10 minutes** after adding the stop solution.

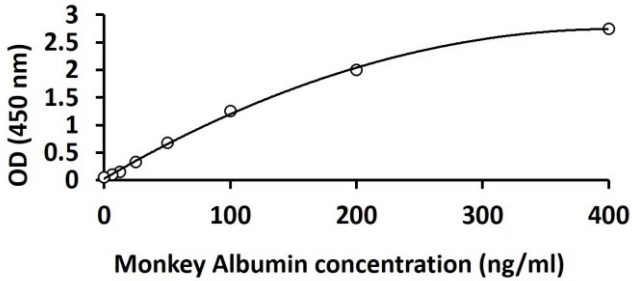


## Monkey Albumin ELISA Kit ARG83473

---

### EXAMPLE OF TYPICAL STANDARD VALUES

The following figures demonstrate typical results with the Monkey Albumin ELISA Kit. One should use the data below for reference only. This data should not be used to interpret actual results.



### CALCULATION OF RESULTS

1. Calculate the average absorbance values for each set of Controls, standards and samples.
2. Using log-log, semi-log or linear graph paper, construct a standard curve by plotting the mean absorbance obtained from each standard against its concentration with absorbance value on the vertical (Y) axis and concentration on the horizontal (X) axis.
3. Automated method: The results in the IFU have been calculated automatically using a 4 PL (4 Parameter Logistics) curve fit. 4 Parameter Logistics is the preferred method. Other data reduction functions may give slightly different results.
4. arigo provides GainData®, an in-house development ELISA data calculator, for ELISA data result analysis. Please refer our GainData® website for details. (<https://www.arigobio.com/elisa-analysis>)
5. If the samples have been diluted, the concentration read from the standard curve must be further converted by the appropriate dilution factor according to the sample preparation procedure as described above.