



HBV surface antigen / HBsAg ELISA Kit

Enzyme Immunoassay for the quantification of HBV surface antigen in purified virus or unpurified viral supernatant.

Catalog number: ARG81344

For research use only. Not for use in diagnostic procedures.

TABLE OF CONTENTS

SECTION	Page
INTRODUCTION.....	3
PRINCIPLE OF THE ASSAY.....	4
MATERIALS PROVIDED & STORAGE INFORMATION.....	5
MATERIALS REQUIRED BUT NOT PROVIDED	5
TECHNICAL HINTS AND PRECAUTIONS	6
SAMPLE COLLECTION & STORAGE INFORMATION	6
REAGENT PREPARATION	7
ASSAY PROCEDURE.....	9
CALCULATION OF RESULTS	10
EXAMPLE OF TYPICAL STANDARD CURVE	11
QUALITY ASSURANCE	11

MANUFACTURED BY:

Arigo Biolaboratories Corporation

Address: No. 22, Ln. 227, Gongyuan Rd., Hsinchu City 300, Taiwan

Phone: +886 (3) 562 1738

Fax: +886 (3) 561 3008

Email: info@arigobio.com

INTRODUCTION

Hepatitis B is an infectious disease caused by the hepatitis B virus (HBV) that affects the liver. It can cause both acute and chronic infections. Many people have no symptoms during the initial infection. The virus is transmitted by exposure to infectious blood or body fluids. Infection around the time of birth or from contact with other people's blood during childhood is the most frequent method by which hepatitis B is acquired in areas where the disease is common. In areas where the disease is rare, intravenous drug use and sexual intercourse are the most frequent routes of infection. The infection can be diagnosed 30 to 60 days after exposure. The diagnosis is usually confirmed by testing the blood for parts of the virus and for antibodies against the virus. It is one of five main hepatitis viruses: A, B, C, D, and E.

HBsAg is present in the sera of patients with viral hepatitis B (with or without clinical symptoms). Patients who developed antibodies against HBsAg (anti-HBsAg seroconversion) are usually considered non-infectious. HBsAg detection by immunoassay is used in blood screening, to establish a diagnosis of hepatitis B infection in the clinical setting (in combination with other disease markers) and to monitor antiviral treatment.

In histopathology, the presence of HBsAg is more commonly demonstrated by the use of the Shikata orcein technique, which uses a natural dye to bind to the antigen in infected liver cells.

Positive HBsAg tests can be due to recent vaccination against Hepatitis B virus but this positivity is unlikely to persist beyond 14 days post-vaccination. [Modified from Wikipedia and hepatitisc.uw.edu: HBsAg & Hepatitis B]

PRINCIPLE OF THE ASSAY

This assay employs the quantitative sandwich enzyme immunoassay technique developed for detection and quantitation of the HBV surface antigen. A monoclonal antibody specific for HBV surface antigen (HBsAg) has been pre-coated onto a microtiter plate. Standards or samples are pipetted into the wells and any HBV surface antigen present is bound by the immobilized antibody. After washing away any unbound substances, a FITC-conjugated antibody specific for HBV surface antigen is added to each well and incubated. Following a washing to remove unbound substances, a HRP-conjugated mouse anti-FITC antibody is added to each microplate well and incubated. After washing away any unbound antibody-enzyme reagent, a substrate solution (TMB) is added to the wells and color develops in proportion to the amount of HBV surface antigen bound in the initial step. The color development is stopped by the addition of acid and the intensity of the color is measured at a wavelength of 450nm \pm 2nm. The concentration of HBV surface antigen in the sample is then determined by comparing the O.D of samples to the standard curve.

MATERIALS PROVIDED & STORAGE INFORMATION

Store the unopened kit at 2-8 °C. Use the kit before expiration date.

Component	Quantity	Storage information
antibody-coated microplate	12 strips X 8 wells	4°C
Standard (10 µg/ml)	100 µl	-20°C
10X Wash Buffer	100 ml	4°C
250X FITC-conjugated-HBV surface antigen Antibody concentrate	60 µl	4°C
1000X HRP-conjugated-FITC Antibody concentrate	20 µl	4°C
Triton X-100 Solution (5%)	15 ml (Ready-to-use)	4°C
Assay Diluent	50 ml (Ready-to-use)	4°C
TMB substrate	12ml (Ready-to-use)	4°C (Protect from light)
STOP solution	12ml (Ready-to-use)	4°C

MATERIALS REQUIRED BUT NOT PROVIDED

- Microplate reader capable of measuring absorbance at 450nm (optional: read at 620 nm as reference wave length)
- Pipettes and pipette tips
- Multichannel micropipette reservoir
- Deionized or distilled water.
- Microplate shaker.
- Automated microplate washer (optional)

TECHNICAL HINTS AND PRECAUTIONS

- Wear protective gloves, clothing, eye, and face protection especially while handling blood or body fluid samples.
- Store Standard at -20°C and other kit components at 4°C at all times.
- Upon receipt, the Standard should be aliquoted and stored at $\leq -20^{\circ}\text{C}$ to avoid repeated freeze-thaw cycles.
- If crystals are observed in the 10X Wash buffer, warm to RT or 37°C until the crystals are completely dissolved.
- Ensure complete reconstitution and dilution of reagents prior to use.
- All reagents should be mixed by gentle inversion or swirling prior to use. Do not induce foaming.
- Before using the kit, spin tubes and bring down all components to the bottom of tubes.
- It is highly recommended that the standards and samples be assayed in duplicates.
- Change pipette tips between the addition of different reagent or samples.

SAMPLE COLLECTION & STORAGE INFORMATION

The sample collection and storage conditions listed below are intended as general guidelines. Sample stability has not been evaluated.

1. (Optional) Dilute HBV sample in culture medium. Include culture medium as a negative control.
2. Transfer 225 μl of each sample to a microcentrifuge tube containing 25 μl of Triton X-100 Solution, Vortex to mix well.
3. Incubate the tube for 30 minutes at 37°C.

HBV surface antigen / HBsAg ELISA Kit ARG81344

Note: For samples that contain anti-HBV surface antigen (HBsAg) antibody, to release HBV surface antigen from the virion and antibody. The sample should be incubated at 56°C for 30 min before assay to inactivate anti-HBsAg antibodies.

REAGENT PREPARATION

- **1X Wash buffer:** Dilute 10X Wash buffer into distilled water to yield 1X Wash buffer, mix well. Storage at 2-8°C.
- **1X FITC-conjugated-HBV surface antigen Antibody working solution:** Dilute the antibody immediately before use; dilute the 250X FITC-conjugated-HBV surface antigen Antibody concentrate into Assay Diluent to yield 1X FITC-conjugated HBV surface antigen antibody working solution. (E.g.: 40 µl of the FITC-conjugated-HBV surface antigen Antibody concentrate (250X) + 9.960 ml of Assay Diluent.) Do not store diluted solutions.
- **1X HRP-conjugated-FITC Antibody working solution:** Dilute the antibody immediately before use; dilute the 1000X HRP-conjugated-FITC Antibody concentrate into Assay Diluent to yield 1X HRP-conjugated-FITC Antibody working solution. (E.g.: 10 µl of the HRP-Streptavidin concentrate (1000X) + 9.990 ml of Assay Diluent.) Do not store diluted solutions.

HBV surface antigen / HBsAg ELISA Kit ARG81344

- **Human HBV surface antigen standard:**
 1. Prepare a series dilution of Human HBV surface antigen standards with Assay Diluent. The Assay Diluent serves as zero standard (0 ng/ml), and the rest of the standard serial dilution can be diluted with Assay Diluent as according to the suggested concentration table below:

Standard No	Human HBV surface antigen (ng/ml)	Assay Diluent (μl)	Standards (μl)
S1	100	990	10 (10 μg/ml stock)
S2	50	500	500 (S1)
S3	25	500	500 (S2)
S4	12.5	500	500 (S3)
S5	6.25	500	500 (S4)
S6	3.125	500	500 (S5)
S7	1.5625	500	500 (S6)
S0	0	500	0

2. Transfer 225μL of each dilution to a microcentrifuge tube containing 25 μl of Triton X-100 Solution. Perform the assay as described in Assay Instructions.

ASSAY PROCEDURE

All materials should be equilibrated to room temperature (18- 25°C) before use, each vial should be mixed thoroughly without foaming prior to use. Warm Substrate Solution to room temperature (RT) before use. Standards, samples and controls should be assayed in duplicates.

1. Remove excess microplate strips from the plate frame, return them to the bag containing the desiccant pack, and reseal it.
2. Add **100 µl of inactivated sample or HBsAg standard** into the appropriate wells in the antibody coated plate. Cover the plate and incubate for **2 hour at 37°C**.
3. Aspirate each well and wash, repeating the process 4 times for a total **5 washes**. Wash by filling each well with **1× Wash Buffer (250 µl)** using a squirt bottle, manifold dispenser, or autowasher. Complete removal of liquid at each is essential to good performance. After the last wash, remove any remaining Wash Buffer by aspirating, decanting or blotting against clean paper towels.
4. Add **100 µl** of the **1:250 diluted 1X FITC-conjugated-HBV surface antigen antibody working solution** to each well, cover the plate and incubate for **1 hour at RT** on a microplate shaker.
5. Aspirate each well and **wash** as step 3.
6. Add **100 µl** of the **1:1000 diluted 1X HRP-conjugated-FITC antibody working solution** to all wells, cover the plate and incubate for **1 hour at RT** on a microplate shaker.
7. **Warm TMB substrate solution to RT** before next wash step. Aspirate each well and **wash as step 3**. Proceed immediately to the next step.

HBV surface antigen / HBsAg ELISA Kit ARG81344

8. Add **100 µl** of **TMB substrate solution** into each well. Incubate for **5-20 mins** at **RT** on a microplate shaker. Avoid exposure to light.

Note: Watch plate carefully; if color changes rapidly, the reaction may need to be stopped sooner to prevent saturation.

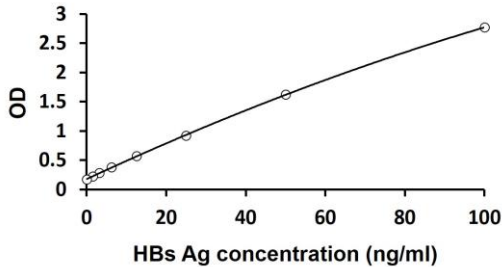
9. Add **100 µl of Stop Solution** to each well and shake lightly to ensure homogeneous mixing.
10. Read the OD with a microplate reader at **450nm** immediately.

CALCULATION OF RESULTS

1. Calculate the average absorbance values for each set of standards, controls and samples.
2. Using log-log, semi-log or linear graph paper, construct a standard curve by plotting the mean absorbance obtained from each standard against its concentration with absorbance value on the vertical (Y) axis and concentration on the horizontal (X) axis.
3. Using the mean absorbance value for each sample determine the corresponding concentration from the standard curve.
4. Automated method: The results in the IFU have been calculated automatically using a 4 PL (4 Parameter Logistics) curve fit. 4 Parameter Logistics is the preferred method. Other data reduction functions may give slightly different results.
5. If the samples have been diluted, the concentration read from the standard curve must be further converted by the appropriate dilution factor according to the sample preparation procedure as described above.

EXAMPLE OF TYPICAL STANDARD CURVE

The following data is for demonstration only and cannot be used in place of data generations at the time of assay.



QUALITY ASSURANCE

Sensitivity

1 ng/ml

Assay Range

1.56- 100 ng/ml