



Mouse MIP-1 alpha / CCL3 ELISA kit

Enzyme Immunoassay for the quantification of Mouse MIP-1 alpha / CCL3 in serum, plasma, cell culture supernatants

Catalog number: ARG80906

Package: 96 wells

For research use only. Not for use in diagnostic procedures.

TABLE OF CONTENTS

SECTION	Page
INTRODUCTION	3
PRINCIPLE OF THE ASSAY	3
MATERIALS PROVIDED & STORAGE INFORMATION.....	4
MATERIALS REQUIRED BUT NOT PROVIDED.....	4
TECHNICAL HINTS AND PRECAUTIONS	5
SAMPLE COLLECTION & STORAGE INFORMATION	5
REAGENT PREPARATION	6
ASSAY PROCEDURE	7
CALCULATION OF RESULTS	8
EXAMPLE OF TYPICAL STANDARD CURVE.....	8
QUALITY ASSURANCE	9

MANUFACTURED BY:

Arigo Biolaboratories Corporation

Address: No. 22, Ln. 227, Gongyuan Rd., Hsinchu City 300, Taiwan

Phone: +886 (3) 562 1738

Fax: +886 (3) 561 3008

Email: info@arigobio.com

INTRODUCTION

CCL3 protein also known as macrophage inflammatory protein 1 alpha (MIP-1 alpha), is a small inducible cytokine with inflammatory and chemokinetic properties. It plays a role in inflammatory responses through binding to the receptors CCR1, CCR4 and CCR5. CCL3 is one of the major HIV-suppressive factors produced by CD8+ T-cells. Recombinant CCL3 (MIP-1 alpha) induces a dose-dependent inhibition of different strains of HIV-1, HIV-2, and simian immunodeficiency virus (SIV). [modified from RefSeq 2010 and UniProtKB]

PRINCIPLE OF THE ASSAY

This assay employs the quantitative sandwich enzyme immunoassay technique. An antibody specific for MIP-1 alpha / CCL3 has been pre-coated onto a microtiter plate. Standards or samples are pipetted into the wells and any MIP-1 alpha / CCL3 present is bound by the immobilized antibody. After washing away any unbound substances, a biotin-conjugated antibody specific for MIP-1 alpha / CCL3 is added to each well and incubate. Following a washing to remove unbound substances, streptavidin conjugated to Horseradish Peroxidase (HRP) is added to each microplate well and incubated. After washing away any unbound antibody-enzyme reagent, a substrate solution (TMB) is added to the wells and color develops in proportion to the amount of MIP-1 alpha / CCL3 bound in the initial step. The color development is stopped by the addition of acid and the intensity of the color is measured at a wavelength of 450nm \pm 2nm. The concentration of MIP-1 alpha / CCL3 in the sample is then determined by comparing the O.D of samples to the standard curve.

MATERIALS PROVIDED & STORAGE INFORMATION

Store the unopened kit at 2-8 °C. Use the kit before expiration date.

Component	Quantity	Storage information
Antibody-coated microplate	8 X 12 strips	4°C. Unused strips should be sealed tightly in the air-tight pouch.
Standard (Lyophilized)	3 X 0.5 ng/vial	4°C
Standard diluent buffer	20 ml	4°C
Antibody conjugate concentrate	1 vial (400 µl)	4°C
Antibody diluent buffer	16 ml	4°C
HRP-Streptavidin concentrate	1 vial (400 µl)	4°C (Protect from light)
HRP-Streptavidin diluent buffer	16 ml	4°C
20X Wash buffer	50 ml	4°C
TMB substrate	12 ml	4°C (Protect from light)
STOP solution	12 ml	4°C
Plate sealer	4 strips	Room temperature

MATERIALS REQUIRED BUT NOT PROVIDED

- Microplate reader capable of measuring absorbance at 450nm
- Pipettes and pipette tips
- Deionized or distilled water
- Automated microplate washer (optional)

TECHNICAL HINTS AND PRECAUTIONS

- Wear protective gloves, clothing, eye, and face protection especially while handling blood or body fluid samples.
- Store the kit at 4°C at all times.
- Briefly spin down the antibody conjugate concentrate and HRP-Streptavidin concentrate before use.
- If crystals are observed in the 20X Wash buffer, warm to RT (not more than 50°C) until the crystals are completely dissolved.
- Ensure complete reconstitution and dilution of reagents prior to use.
- It is highly recommended that the standards, samples and controls be assayed in duplicates.
- Change pipette tips between the addition of different reagent or samples.

SAMPLE COLLECTION & STORAGE INFORMATION

The sample collection and storage conditions listed below are intended as general guidelines. Sample stability has not been evaluated.

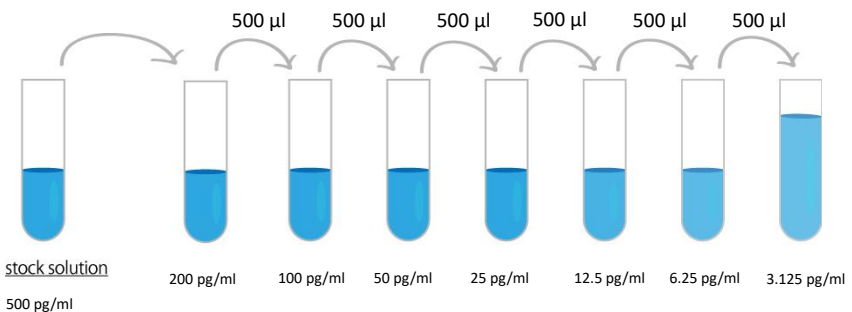
Cell Culture Supernatants - Remove particulates by centrifugation and aliquot & store samples at ≤ -20 °C. Avoid repeated freeze-thaw cycles.

Serum - Use a serum separator tube (SST) and allow samples to clot for 30 minutes before centrifugation for 15 minutes at 1000 x g. Remove serum and assay immediately or aliquot and store samples at ≤ -20 °C. Avoid repeated freeze-thaw cycles.

Plasma - Collect plasma using EDTA or heparin as an anticoagulant. Centrifuge for 15 minutes at 1000 x g within 30 minutes of collection. Assay immediately or aliquot and store samples at ≤ -20 °C. Avoid repeated freeze-thaw cycles.

REAGENT PREPARATION

- **1X Wash buffer:** Dilute 20X Wash buffer into distilled water to yield 1X Wash buffer.
- **1X Antibody conjugate:** Dilute 30X antibody conjugate concentrate into 1X antibody diluent buffer to yield 1X Detection antibody solution.
- **1X HRP-Streptavidin Solution:** Dilute 30X HRP-Streptavidin concentrate solution into 1X HRP-Streptavidin diluent buffer to yield 1X HRP-Streptavidin Solution buffer.
- **Standards:** Reconstitute the standard with **1 ml** standard diluent buffer to yield a stock concentration of **500 pg/ml**. Make sure the standard is dissolved completely before making serial dilutions. The standard diluent buffer serves as zero standard (0 pg/ml), and the rest of the standard serial dilution can be diluted as according to the suggested concentration below: **200 pg/ml, 100 pg/ml, 50 pg/ml, 25 pg/ml, 12.5 pg/ml, 6.25 pg/ml, 3.125 pg/ml.**



ASSAY PROCEDURE

All materials should be equilibrated to room temperature (RT) before use. Standards, samples and controls should be assayed in duplicates.

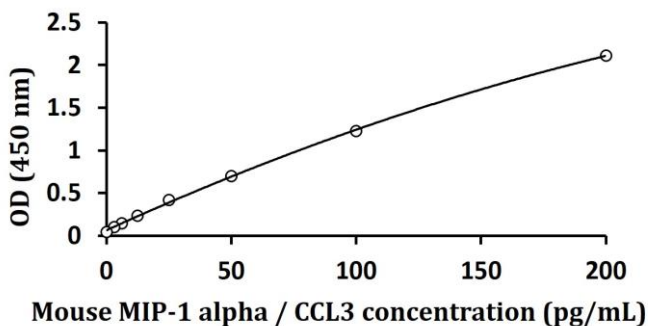
1. Remove excess microplate strips from the plate frame, return them to the foil pouch containing the desiccant pack, and reseal it.
2. Add **100 µl** of standards, samples and zero controls (standard diluent buffer) into wells. Incubate for 1.5 h at 37 °C.
3. Aspirate each well and wash, repeating the process four times for a total five washes. Wash by filling each well with 1× Wash Buffer (350 µl) using a squirt bottle, manifold dispenser, or autowasher. Complete removal of liquid at each is essential to good performance. After the last wash, remove any remaining Wash Buffer by aspirating, decanting or blotting against clean paper towels.
4. Add **100 µl** 1X Antibody conjugate into each well. Cover wells and incubate for 1 hour at 37°C.
5. Aspirate each well and wash as step 3.
6. Add **100 µl** of 1X HRP-Streptavidin solution to each well. Cover wells and incubate for 30 minutes at 37°C.
7. Aspirate each well and wash as step 3.
8. Add **100 µl** of TMB Reagent to each well. Incubate for 15 minutes at 37°C in dark.
9. Add **100 µl** of Stop Solution to each well. The color of the solution should change from blue to yellow.
10. Read the OD with a microplate reader at 450nm immediately.

CALCULATION OF RESULTS

1. Calculate the average absorbance values for each set of standards, controls and patient samples.
2. Using linear graph paper, construct a standard curve by plotting the mean absorbance obtained from each standard against its concentration with absorbance value on the vertical (Y) axis and concentration on the horizontal (X) axis.
3. Using the mean absorbance value for each sample determine the corresponding concentration from the standard curve.
4. Automated method: The results in the IFU have been calculated automatically using a 4 PL (4 Parameter Logistics) curve fit. 4 Parameter Logistics is the preferred method. Other data reduction functions may give slightly different results.
5. arigo provides GainData®, an in-house development ELISA data calculator, for ELISA data result analysis. Please refer our GainData® website for details. (<https://www.arigobio.com/elisa-analysis>)

EXAMPLE OF TYPICAL STANDARD CURVE

The following data is for demonstration only and cannot be used in place of data generations at the time of assay.



QUALITY ASSURANCE

Sensitivity

The minimum detectable dose (MDD) of Mouse MIP-1 alpha / CCL3 ranged from 3.125-200 pg/ml. The mean MDD was 1.6 pg/ml.

Specificity

This assay recognizes natural and recombinant Mouse MIP-1 alpha / CCL3.

Intra-assay and Inter-assay precision

The CV values of both intra and inter precision fall below 10%.