

ARG83463 Rat CRP2 / CSRP2 ELISA Kit

Package: 96 wells

Store at: 4°C

Summary

| | |
|---------------------|------------------------------------------------------------------------------------------------------------------------------------------------------------------------------------------------------------------------------------------------------------------------------------|
| Product Description | ARG83463 Rat CRP2 / CSRP2 ELISA Kit is an Enzyme Immunoassay kit for the quantification of Rat CRP2 / CSRP2 in Serum, plasma and cell culture supernatants. |
| Tested Reactivity | Rat |
| Tested Application | ELISA |
| Target Name | CRP2 / CSRP2 |
| Conjugation | HRP |
| Conjugation Note | Substrate: TMB and read at 450 nm. |
| Sensitivity | 30 pg/ml |
| Sample Type | Serum, plasma and cell culture supernatants. |
| Standard Range | 62.5 - 4000 pg/ml |
| Sample Volume | 100 µl |
| Alternate Names | CSRP2; Cysteine And Glycine Rich Protein 2; SmLIM; CRP2; LMO5; Cysteine And Glycine-Rich Protein 2; Smooth Muscle Cell LIM Protein; LIM Domain Only Protein 5; Cysteine-Rich Protein 2; LMO-5; Epididymis Secretory Sperm Binding Protein; LIM Domain Only 5, Smooth Muscle; SMLIM |

Application Instructions

| | |
|------------|-----------|
| Assay Time | 3.5 hours |
|------------|-----------|

Properties

| | |
|---------------------|--------------------------------------------------------------------------------------------------------------------------------------------------------------------------------------------------------------------------------------------------------|
| Form | 96 well |
| Storage instruction | Store the kit at 4°C. Keep microplate wells sealed in a dry bag with desiccants. Do not expose test reagents to heat, sun or strong light during storage and usage. Please refer to the product user manual for detail temperatures of the components. |
| Note | For laboratory research only, not for drug, diagnostic or other use. |

Bioinformation

| | |
|----------------|-------------------------------------------------------------------------------------------------------------------------------------------------------------------------------------------------------------------------------------------------------------------------------------------------------------------------------------------------------------------------------------------------------------------------------------------------------------------------------------------------------------------------|
| Gene Symbol | CSRP2 |
| Gene Full Name | Cysteine And Glycine Rich Protein 2 |
| Background | CSRP2 is a member of the CSRP family of genes, encoding a group of LIM domain proteins, which may be involved in regulatory processes important for development and cellular differentiation. CRP2 contains two copies of the cysteine-rich amino acid sequence motif (LIM) with putative zinc-binding activity, and may be involved in regulating ordered cell growth. Other genes in the family include CSRP1 and CSRP3. Alternative splicing results in multiple transcript variants. [provided by RefSeq, Jul 2014] |
| Function | Drastically down-regulated in response to PDGF-BB or cell injury, that promote smooth muscle cell proliferation and dedifferentiation. Seems to play a role in the development of the embryonic vascular |

system.

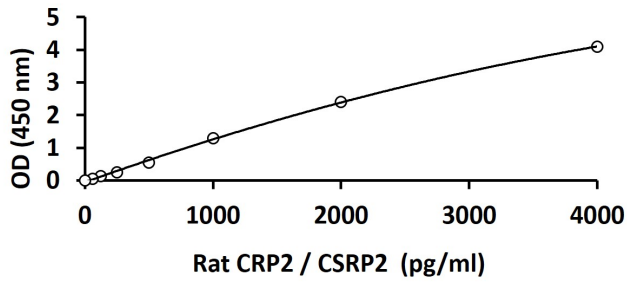
PTM

Acetylation, Isopeptide bond, Ubl conjugation

Cellular Localization

Nucleus

Images



ARG83463 Rat CRP2 / CSRP2 ELISA Kit standard curve image

ARG83463 Rat CRP2 / CSRP2 ELISA Kit results of a typical standard run with optical density reading at 450 nm.