

ARG83460 Mouse HtrA2 / Omi ELISA Kit

Package: 96 wells

Store at: 4°C

Summary

Product Description	ARG83460 Mouse HtrA2 / Omi ELISA Kit is an Enzyme Immunoassay kit for the quantification of Mouse HtrA2 / Omi in Serum, plasma and cell culture supernatants.
Tested Reactivity	Ms
Tested Application	ELISA
Target Name	HtrA2 / Omi
Conjugation	HRP
Conjugation Note	Substrate: TMB and read at 450 nm.
Sensitivity	15 pg/ml
Sample Type	Serum, plasma and cell culture supernatants.
Standard Range	31.2 - 2000 pg/ml
Sample Volume	100 µl
Alternate Names	Serine protease HTRA2, mitochondrial; Serine proteinase OMI; Omi stress-regulated endoprotease; OMI; EC 3.4.21.108; PARK13; High temperature requirement protein A2; PRSS25; Serine protease 25; HtrA2

Application Instructions

Assay Time	3.5 hours
------------	-----------

Properties

Form	96 well
Storage instruction	Store the kit at 4°C. Keep microplate wells sealed in a dry bag with desiccants. Do not expose test reagents to heat, sun or strong light during storage and usage. Please refer to the product user manual for detail temperatures of the components.
Note	For laboratory research only, not for drug, diagnostic or other use.

Bioinformation

Gene Symbol	HTRA2
Gene Full Name	HtrA serine peptidase 2
Background	This gene encodes a serine protease. The protein has been localized in the endoplasmic reticulum and interacts with an alternatively spliced form of mitogen-activated protein kinase 14. The protein has also been localized to the mitochondria with release to the cytosol following apoptotic stimulus. The protein is thought to induce apoptosis by binding the apoptosis inhibitory protein baculoviral IAP repeat-containing 4. Nuclear localization of this protein has also been observed. Alternate splicing of this gene results in two transcript variants encoding different isoforms. Additional transcript variants have been described, but their full-length sequences have not been determined. [provided by RefSeq, Jul 2008]
Function	Serine protease that shows proteolytic activity against a non-specific substrate beta-casein. Promotes

or induces cell death either by direct binding to and inhibition of BIRC proteins (also called inhibitor of apoptosis proteins, IAPs), leading to an increase in caspase activity, or by a BIRC inhibition-independent, caspase-independent and serine protease activity-dependent mechanism. Cleaves THAP5 and promotes its degradation during apoptosis. Isoform 2 seems to be proteolytically inactive. [UniProt]

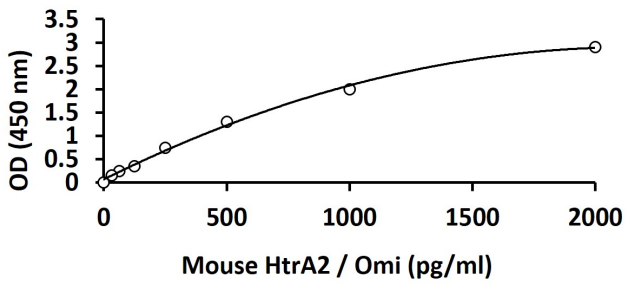
PTM

Autoproteolytically activated. [UniProt]

Cellular Localization

Mitochondrion intermembrane space_x000D_Mitochondrion membrane; Single-pass membrane protein. [UniProt]

Images



ARG83460 Mouse HtrA2 / Omi ELISA Kit standard curve image

ARG83460 Mouse HtrA2 / Omi ELISA Kit results of a typical standard run with optical density reading at 450 nm.