

ARG83444 Human IL36RN ELISA Kit

Package: 96 wells

Store at: 4°C

Summary

Product Description	ARG83444 Human IL36RN ELISA Kit is an Enzyme Immunoassay kit for the quantification of Human IL36RN in Serum, plasma and cell culture supernatants., Tissue Homogenates
Tested Reactivity	Hu
Tested Application	ELISA
Target Name	IL36RN
Conjugation	HRP
Conjugation Note	Substrate: TMB and read at 450 nm.
Sensitivity	50 pg/ml
Sample Type	Serum, plasma and cell culture supernatants., Tissue Homogenates
Standard Range	93.7 - 6000 pg/ml
Sample Volume	100 µl
Alternate Names	IL36RN; Interleukin 36 Receptor Antagonist; IL1HY1; IL1RP3; FIL1D; IL1L1; Interleukin-1 Receptor Antagonist Homolog 1; Interleukin-1 HY1; FIL1(DELTA); IL-1F5; IL36RA; IL1F5; FIL1; Interleukin-36 Receptor Antagonist Protein; Interleukin 1 Family, Member 5 (Delta); Interleukin-1-Like Protein 1; IL-1 Related Protein 3; IL-1ra Homolog 1; MGC29840; IL-36Ra; IL-1F5 (IL-1HY1, FIL1-Delta, IL-1RP3, IL-1L1, IL-1-Delta); IL1F5 (Canonical Product IL-1F5a); Family Of Interleukin 1-Delta; Interleukin-1 Family Member 5; IL-1-Related Protein 3; Interleukin-1 Delta; FIL1 Delta; IL-1 Delta; PSORS14; IL-1RP3; IL-1HY1; IL-1L1; PSORP

Application Instructions

Assay Time	3.5 hours
------------	-----------

Properties

Form	96 well
Storage instruction	Store the kit at 4°C. Keep microplate wells sealed in a dry bag with desiccants. Do not expose test reagents to heat, sun or strong light during storage and usage. Please refer to the product user manual for detail temperatures of the components.
Note	For laboratory research only, not for drug, diagnostic or other use.

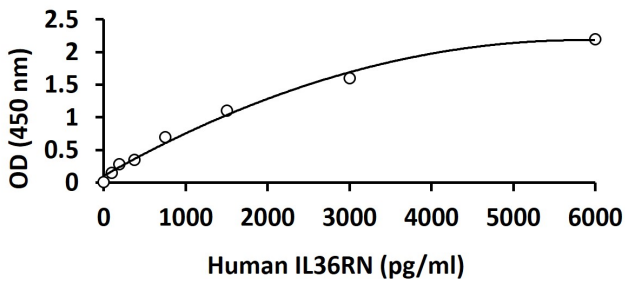
Bioinformation

Gene Symbol	IL36RN
Gene Full Name	Interleukin 36 Receptor Antagonist
Background	The protein encoded by this gene is a member of the interleukin 1 cytokine family. This cytokine was shown to specifically inhibit the activation of NF-kappaB induced by interleukin 1 family, member 6 (IL1F6). This gene and eight other interleukin 1 family genes form a cytokine gene cluster on chromosome 2. Two alternatively spliced transcript variants encoding the same protein have been

reported.

Function	Inhibits the activity of interleukin-36 (IL36A,IL36B and IL36G) by binding to receptor IL1RL2 and preventing its association with the coreceptor IL1RAP for signaling. Part of the IL-36 signaling system that is thought to be present in epithelial barriers and to take part in local inflammatory response; similar to the IL-1 system with which it shares the coreceptor. Proposed to play a role in skin inflammation. May be involved in the innate immune response to fungal pathogens, such as <i>Aspergillus fumigatus</i> . May activate an anti-inflammatory signaling pathway by recruiting SIGIRR.
PTM	Disulfide bond
Cellular Localization	Cytoplasm, Secreted

Images



ARG83444 Human IL36RN ELISA Kit standard curve image

ARG83444 Human IL36RN ELISA Kit results of a typical standard run with optical density reading at 450 nm.
