

ARG83437 Human Cytochrome C ELISA Kit

Package: 96 wells
Store at: 4°C

Summary

Product Description	ARG83437 Human Cytochrome C ELISA Kit is an Enzyme Immunoassay kit for the quantification of Human Cytochrome C in Cell Lysates
Tested Reactivity	Hu
Tested Application	ELISA
Target Name	Cytochrome C
Conjugation	HRP
Conjugation Note	Substrate: TMB and read at 450 nm.
Sensitivity	40 pg/ml
Sample Type	Cell Lysates
Standard Range	78 - 5000 pg/ml
Sample Volume	100 µl
Alternate Names	CYC; HCS; Cytochrome c; THC4

Application Instructions

Assay Time	3.5 hours
------------	-----------

Properties

Form	96 well
Storage instruction	Store the kit at 4°C. Keep microplate wells sealed in a dry bag with desiccants. Do not expose test reagents to heat, sun or strong light during storage and usage. Please refer to the product user manual for detail temperatures of the components.
Note	For laboratory research only, not for drug, diagnostic or other use.

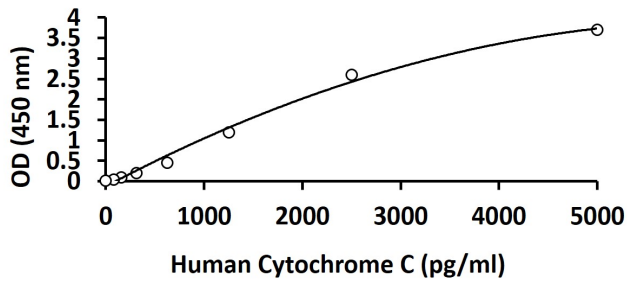
Bioinformation

Gene Symbol	CYCS
Gene Full Name	cytochrome c, somatic
Background	Cytochrome c (m.w. 12,500) is an electron transport protein from mitochondria. It is released from mitochondria to cytoplasm during the early stages of apoptosis, prior to caspase activation, DNA fragmentation, and loss of membrane potential. The cytoplasmic cytochrome c is associated with Apaf-1 and caspase-9 to activate caspase-3 and other caspases.
Function	Electron carrier protein. The oxidized form of the cytochrome c heme group can accept an electron from the heme group of the cytochrome c1 subunit of cytochrome reductase. Cytochrome c then transfers this electron to the cytochrome oxidase complex, the final protein carrier in the mitochondrial electron-transport chain.

Plays a role in apoptosis. Suppression of the anti-apoptotic members or activation of the pro-apoptotic members of the Bcl-2 family leads to altered mitochondrial membrane permeability resulting in release of cytochrome c into the cytosol. Binding of cytochrome c to Apaf-1 triggers the activation of caspase-9, which then accelerates apoptosis by activating other caspases. [UniProt]

PTM Acetylation, Phosphoprotein
Cellular Localization Mitochondrion

Images



ARG83437 Human Cytochrome C ELISA Kit standard curve image

ARG83437 Human Cytochrome C ELISA Kit results of a typical standard run with optical density reading at 450 nm.
