

## ARG83435 Human BTC / Betacellulin ELISA Kit

Package: 96 wells

Store at: 4°C

### Summary

Product Description	ARG83435 Human BTC / Betacellulin ELISA Kit is an Enzyme Immunoassay kit for the quantification of Human BTC / Betacellulin in Serum, plasma and cell culture supernatants.
Tested Reactivity	Hu
Tested Application	ELISA
Target Name	BTC / Betacellulin
Conjugation	HRP
Conjugation Note	Substrate: TMB and read at 450 nm.
Sensitivity	10 pg/ml
Sample Type	Serum, plasma and cell culture supernatants.
Standard Range	15.6 - 1000 pg/ml
Sample Volume	100 µl
Alternate Names	Probetacellulin; BTC

### Application Instructions

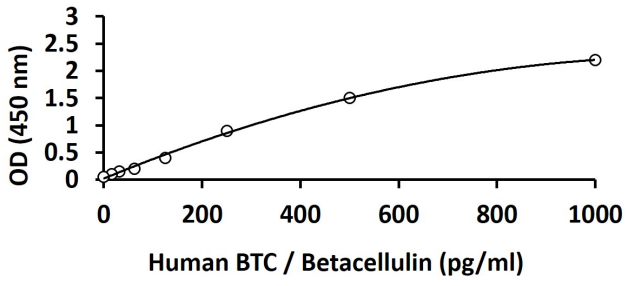
Assay Time	3.5 hours
------------	-----------

### Properties

Form	96 well
Storage instruction	Store the kit at 4°C. Keep microplate wells sealed in a dry bag with desiccants. Do not expose test reagents to heat, sun or strong light during storage and usage. Please refer to the product user manual for detail temperatures of the components.
Note	For laboratory research only, not for drug, diagnostic or other use.

### Bioinformation

Gene Symbol	BTC
Gene Full Name	betacellulin
Background	The protein encoded by this gene is a member of the EGF family of growth factors. It is synthesized primarily as a transmembrane precursor, which is then processed to mature molecule by proteolytic events. This protein is a ligand for the EGF receptor. [provided by RefSeq, Jul 2008]
Function	Growth factor that binds to EGFR, ERBB4 and other EGF receptor family members. Potent mitogen for retinal pigment epithelial cells and vascular smooth muscle cells. [UniProt]
PTM	Disulfide bond, Glycoprotein
Cellular Localization	Cell membrane, Membrane, Secreted



ARG83435 Human BTC / Betacellulin ELISA Kit standard curve image

ARG83435 Human BTC / Betacellulin ELISA Kit results of a typical standard run with optical density reading at 450 nm.