

ARG83346 Human PRTG / Protogenin ELISA Kit

Package: 96 wells
Store at: 4°C

Summary

Product Description	ARG83346 Human PRTG / Protogenin ELISA Kit is an Enzyme Immunoassay kit for the quantification of Human PRTG / Protogenin in serum, plasma and cell culture supernatants.
Tested Reactivity	Hu
Tested Application	ELISA
Specificity	There is no detectable cross-reactivity with other relevant proteins.
Target Name	PRTG / Protogenin
Conjugation	HRP
Conjugation Note	Substrate: TMB and read at 450 nm.
Sensitivity	8 pg/ml
Detection Range	15.6 pg/ml - 1000 pg/ml
Sample Type	Serum, Plasma and Cell culture supernatants.
Alternate Names	PRTG; Protogenin; IGDCC5; Immunoglobulin Superfamily, DCC Subclass, Member 5; Protogenin Homolog (Gallus Gallus); FLJ25756; Protein Shen-Dan; Shen-Dan

Application Instructions

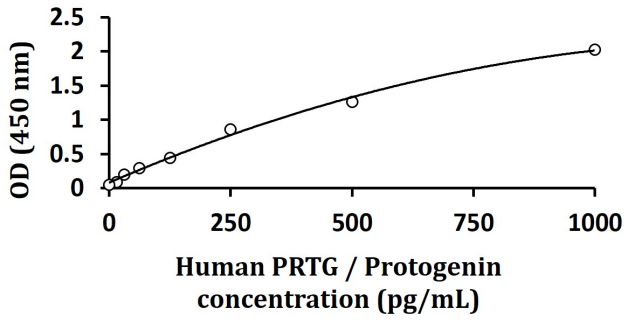
Assay Time	~ 5 hours
------------	-----------

Properties

Form	96 well
Storage instruction	Store the kit at 2-8°C. Keep microplate wells sealed in a dry bag with desiccants. Do not expose test reagents to heat, sun or strong light during storage and usage. Please refer to the product user manual for detail temperatures of the components.
Note	For laboratory research only, not for drug, diagnostic or other use.

Bioinformation

Gene Symbol	PRTG
Gene Full Name	Protogenin
Background	This gene encodes a member of the immunoglobulin superfamily. The encoded transmembrane protein has been associated with the development of various tissues, especially neurogenesis. It has been suggested that this gene may be associated with attention deficit hyperactivity disorder (ADHD).
Function	May play a role in anteroposterior axis elongation.
PTM	Disulfide bond, Glycoprotein
Cellular Localization	Membrane



ARG83346 Human PRTG / Protogenin ELISA Kit standard curve image

ARG83346 Human PRTG / Protogenin ELISA Kit results of a typical standard run with optical density reading at 450 nm.
