

## ARG83337 Human IL1 beta ELISA Kit

Package: 96 wells  
Store at: 4°C; -20°C

### Component

| Cat. No.    | Component Name                      | Package           | Temp                     |
|-------------|-------------------------------------|-------------------|--------------------------|
| ARG83337-01 | Antibody Coated Microplate          | 8 X 12 strips     | 4°C                      |
| ARG83337-02 | Standard (Lyophilized)              | 3 vials           | 4°C                      |
| ARG83337-03 | Standard / Sample Diluent Buffer    | 20 ml             | 4°C                      |
| ARG83337-04 | 100X Antibody Conjugate concentrate | 120 µl            | ≤ -20°C                  |
| ARG83337-05 | 1000X HRP-Streptavidin concentrate  | 15 µl             | 4°C (protect from light) |
| ARG83337-06 | Antibody Diluent Buffer             | 35 ml             | 4°C                      |
| ARG83337-07 | 10X Wash Buffer                     | 50 ml             | 4°C                      |
| ARG83337-08 | TMB Substrate                       | 12 ml             | 4°C (protect from light) |
| ARG83337-09 | Stop Solution                       | 12 ml             | Room temperature         |
| ARG83337-10 | Plate sealer                        | 4 adhesive strips | Room temperature         |

### Summary

|                     |  |
|---------------------|--|
| Product Description | ARG83337 Human IL1 beta ELISA Kit is an Enzyme Immunoassay kit for the quantification of Human IL1 beta in Serum, Plasma, Cell culture supernatants. |
| Tested Reactivity   | Hu   |
| Tested Application  | ELISA  |
| Specificity         | No significant cross-reactivity or interference with Human IL-1 alpha; mouse IL-1 alpha, IL-1 beta; rat IL-1 alpha; porcine IL-1 alpha, IL-1 beta    |
| Target Name         | IL1 beta   |
| Conjugation         | HRP  |
| Conjugation Note    | Substrate: TMB and read at 450 nm  |
| Sensitivity         | 3.9 pg/ml  |
| Sample Type         | Serum, Plasma, Cell culture supernatants   |
| Standard Range      | 7.8 - 500 pg/ml  |
| Sample Volume       | 50 µl  |
| Precision           | CV:  |

Alternate Names Interleukin-1 beta; IL1-BETA; IL-1; IL-1 beta; Catabolin; IL1F2

## Application Instructions

---

Assay Time 4 hours

## Properties

---

Form 96 well

Storage instruction Store the kit at 2-8°C. Keep microplate wells sealed in a dry bag with desiccants. Do not expose test reagents to heat, sun or strong light during storage and usage. Please refer to the product user manual for detail temperatures of the components.

Note For laboratory research only, not for drug, diagnostic or other use.

## Bioinformation

---

Gene Symbol IL1B

Gene Full Name interleukin 1, beta

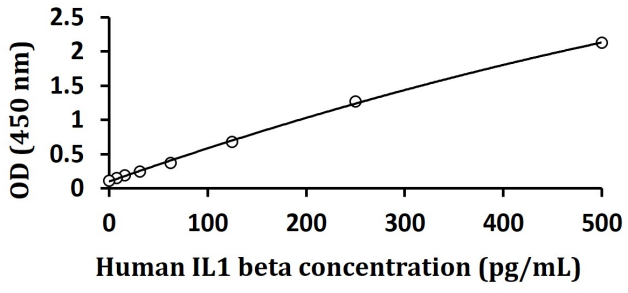
Background IL1 beta protein is a member of the interleukin 1 cytokine family. This cytokine is produced by activated macrophages as a proprotein, which is proteolytically processed to its active form by caspase 1 (CASP1/ICE). This cytokine is an important mediator of the inflammatory response, and is involved in a variety of cellular activities, including cell proliferation, differentiation, and apoptosis. The induction of cyclooxygenase-2 (PTGS2/COX2) by this cytokine in the central nervous system (CNS) is found to contribute to inflammatory pain hypersensitivity. This gene and eight other interleukin 1 family genes form a cytokine gene cluster on chromosome 2. [provided by RefSeq, Jul 2008]

Function IL1 beta is a potent proinflammatory cytokine. Initially discovered as the major endogenous pyrogen, induces prostaglandin synthesis, neutrophil influx and activation, T-cell activation and cytokine production, B-cell activation and antibody production, and fibroblast proliferation and collagen production. Promotes Th17 differentiation of T-cells. Synergizes with IL12/interleukin-12 to induce IFNG synthesis from T-helper 1 (Th1) cells (PubMed:10653850). [UniProt]

Highlight Related products:  
[IL1 beta antibodies](#); [IL1 beta ELISA Kits](#); [IL1 beta Duos / Panels](#); [IL1 beta recombinant proteins](#);  
Related news:  
[HMGB1 in inflammation](#)  
[Inflammatory Cytokines](#)  
[Activation of IL-1 beta and IL-18 by Canonical Inflammasome Pathway](#)  
[LKB1 deficiency in T cells promotes gut tumors](#)  
[Exploring Antiviral Immune Response](#)  
[RIP1 activation and pathogenesis of NASH](#)  
New ELISA data calculation tool:  
[Simplify the ELISA analysis by GainData](#)

Research Area Cell Biology and Cellular Response kit; Immune System kit; Metabolism kit

PTM Activation of the IL1B precursor involves a CASP1-catalyzed proteolytic cleavage. Processing and secretion are temporarily associated.



ARG83337 Human IL1 beta ELISA Kit standard curve image

ARG83337 Human IL1 beta ELISA Kit results of a typical standard run with optical density reading at 450 nm.

---