

ARG83332 Human Apolipoprotein E ELISA Kit (Rapid One-Step)

Package: 96 wells

Store at: 4°C

Summary

Product Description	Human Apolipoprotein E ELISA Kit (Rapid One-Step) is an Enzyme Immunoassay kit for the quantification of Human Apolipoprotein E in serum, plasma, saliva, urine, human milk and cell culture supernatants. It is a rapid One-step 90 minutes protocol.
Tested Reactivity	Hu
Tested Application	ELISA
Specificity	There is no detectable cross-reactivity with other relevant proteins.
Target Name	Apolipoprotein E
Conjugation	HRP
Conjugation Note	Substrate: TMB and read at 450 nm.
Sensitivity	60 pg/ml
Detection Range	3.12 ng/ml - 200 ng/ml
Sample Type	Serum, plasma, saliva, urine, human milk and cell culture supernatants
Precision	Intra-Assay CV: 6.8% Inter-Assay CV: 8.4%
Alternate Names	Apolipoprotein E; Apo-E; APO-E; LPG; AD2; LDLCQ5

Application Instructions

Assay Time	~ 1.5 hours
------------	-------------

Properties

Form	96 well
Storage instruction	Store the kit at 2-8°C. Keep microplate wells sealed in a dry bag with desiccants. Do not expose test reagents to heat, sun or strong light during storage and usage. Please refer to the product user manual for detail temperatures of the components.
Note	For laboratory research only, not for drug, diagnostic or other use.

Bioinformation

Gene Symbol	APOE
Gene Full Name	apolipoprotein E
Background	The protein encoded by this gene is a major apoprotein of the chylomicron. It binds to a specific liver and peripheral cell receptor, and is essential for the normal catabolism of triglyceride-rich lipoprotein constituents. This gene maps to chromosome 19 in a cluster with the related apolipoprotein C1 and C2 genes. Mutations in this gene result in familial dysbetalipoproteinemia, or type III hyperlipoproteinemia

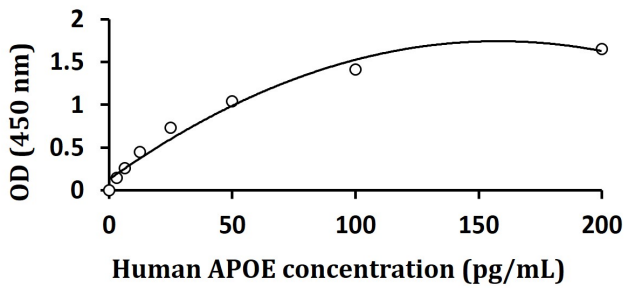
(HLP III), in which increased plasma cholesterol and triglycerides are the consequence of impaired clearance of chylomicron and VLDL remnants. Alternative splicing results in multiple transcript variants. [provided by RefSeq, Nov 2014]

Function Mediates the binding, internalization, and catabolism of lipoprotein particles. It can serve as a ligand for the LDL (apo B/E) receptor and for the specific apo-E receptor (chylomicron remnant) of hepatic tissues. [UniProt]

Highlight Related products:
[Apolipoprotein antibodies; Apolipoprotein ELISA Kits;](#)
New ELISA data calculation tool:
[Simplify the ELISA analysis by GainData](#)

PTM Synthesized with the sialic acid attached by O-glycosidic linkage and is subsequently desialylated in plasma. O-glycosylated with core 1 or possibly core 8 glycans. Thr-307 and Ser-314 are minor glycosylation sites compared to Ser-308. Glycated in plasma VLDL of normal subjects, and of hyperglycemic diabetic patients at a higher level (2-3 fold). Phosphorylated by FAM20C in the extracellular medium.

Images



ARG83332 Human Apolipoprotein E ELISA Kit (Rapid One-Step) standard curve image

ARG83332 Human Apolipoprotein E ELISA Kit (Rapid One-Step) results of a typical standard run with optical density reading at 450 nm.
