

## ARG83316 Human LRG1 ELISA Kit

Package: 96 wells  
Store at: 4°C

### Summary

Product Description	ARG83316 Human LRG1 ELISA Kit is an Enzyme Immunoassay kit for the quantification of Human LRG1 in Serum, Plasma and Cell culture supernatants.
Tested Reactivity	Hu
Tested Application	ELISA
Specificity	There is no detectable cross-reactivity with other relevant proteins.
Target Name	LRG1
Conjugation	HRP
Conjugation Note	Substrate: TMB and read at 450 nm.
Sensitivity	300 pg/ml
Detection Range	625 pg/ml - 40,000 pg/ml
Sample Type	Serum, Plasma and Cell culture supernatants
Precision	Intra-Assay CV: 5.2% Inter-Assay CV: 4.7%
Alternate Names	HMFT1766; Leucine-rich alpha-2-glycoprotein; LRG

### Application Instructions

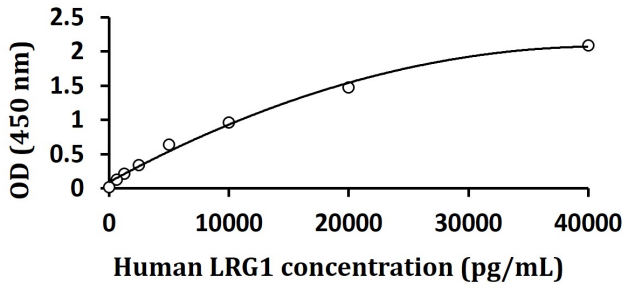
Assay Time	~ 5 hours
------------	-----------

### Properties

Form	96 well
Storage instruction	Store the kit at 2-8°C. Keep microplate wells sealed in a dry bag with desiccants. Do not expose test reagents to heat, sun or strong light during storage and usage. Please refer to the product user manual for detail temperatures of the components.
Note	For laboratory research only, not for drug, diagnostic or other use.

### Bioinformation

Gene Symbol	LRG1
Gene Full Name	leucine-rich alpha-2-glycoprotein 1
Background	The leucine-rich repeat (LRR) family of proteins, including LRG1, have been shown to be involved in protein-protein interaction, signal transduction, and cell adhesion and development. LRG1 is expressed during granulocyte differentiation (O'Donnell et al., 2002 [PubMed 12223515]). [supplied by OMIM, Mar 2008]



ARG83316 Human LRG1 ELISA Kit standard curve image

ARG83316 Human LRG1 ELISA Kit results of a typical standard run with optical density reading at 450 nm.

---