

ARG83314 Human CD107b / LAMP2 ELISA Kit

Package: 96 wells
Store at: 4°C

Summary

Product Description	ARG83314 Human CD107b / LAMP2 ELISA Kit is an Enzyme Immunoassay kit for the quantification of Human CD107b / LAMP2 in Serum, Plasma and Cell culture supernatants.
Tested Reactivity	Hu
Tested Application	ELISA
Specificity	There is no detectable cross-reactivity with other relevant proteins.
Target Name	CD107b / LAMP2
Conjugation	HRP
Conjugation Note	Substrate: TMB and read at 450 nm.
Sensitivity	150 pg/ml
Detection Range	312 pg/ml - 20,000 pg/ml
Sample Type	Serum, Plasma and Cell culture supernatants
Precision	Intra-Assay CV: 3.6% Inter-Assay CV: 5.9%
Alternate Names	CD antigen CD107b; LAMPB; CD107b; LGP110; Lysosome-associated membrane glycoprotein 2; LAMP-2; CD107 antigen-like family member B; Lysosome-associated membrane protein 2

Application Instructions

Assay Time	~ 5 hours
------------	-----------

Properties

Form	96 well
Storage instruction	Store the kit at 2-8°C. Keep microplate wells sealed in a dry bag with desiccants. Do not expose test reagents to heat, sun or strong light during storage and usage. Please refer to the product user manual for detail temperatures of the components.
Note	For laboratory research only, not for drug, diagnostic or other use.

Bioinformation

Gene Symbol	LAMP2
Gene Full Name	lysosomal-associated membrane protein 2
Background	CD107b (lysosome-associated membrane protein-2, LAMP-2), together with CD107a / LAMP-1, is a major constituent of lysosomal membrane. The LAMP proteins are involved in lysosome biogenesis and are required for fusion of lysosomes with phagosomes, especially CD107b is important regulator in successful phagosomal maturation. CD107b deficiency causes an accumulation of autophagosomes in many tissues leading to cardiomyopathy and myopathy (Danons disease). Immature CD107b is an approximately 45 kDa protein, but after extensive glycosylation the mature glycoprotein has about

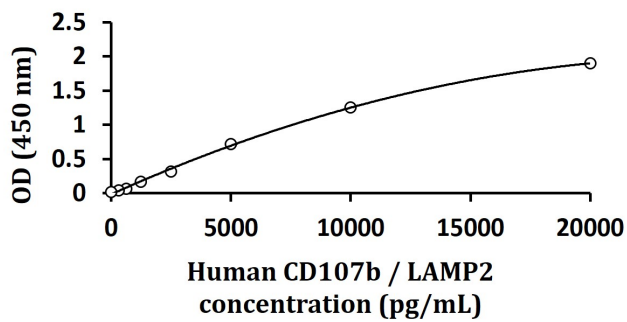
100-120 kDa.

Function Implicated in tumor cell metastasis. May function in protection of the lysosomal membrane from autodigestion, maintenance of the acidic environment of the lysosome, adhesion when expressed on the cell surface (plasma membrane), and inter- and intracellular signal transduction. Protects cells from the toxic effects of methylating mutagens. [UniProt]

Research Area Cell Biology and Cellular Response antibody; Cell Death antibody; Controls and Markers antibody; Developmental Biology antibody; Immune System antibody; Metabolism antibody; Signaling Transduction antibody

PTM O- and N-glycosylated; some of the 16 N-linked glycans are polylactosaminoglycans.

Images



ARG83314 Human CD107b / LAMP2 ELISA Kit standard curve image

ARG83314 Human CD107b / LAMP2 ELISA Kit results of a typical standard run with optical density reading at 450 nm.