

ARG83313 Human CD107a / LAMP1 ELISA Kit

Package: 96 wells
Store at: 4°C

Summary

Product Description	ARG83313 Human CD107a / LAMP1 ELISA Kit is an Enzyme Immunoassay kit for the quantification of Human CD107a / LAMP1 in Serum, Plasma and Cell culture supernatants.
Tested Reactivity	Hu
Tested Application	ELISA
Specificity	There is no detectable cross-reactivity with other relevant proteins.
Target Name	CD107a / LAMP1
Conjugation	HRP
Conjugation Note	Substrate: TMB and read at 450 nm.
Sensitivity	170 pg/ml
Detection Range	312 pg/ml - 20,000 pg/ml
Sample Type	Serum, Plasma and Cell culture supernatants
Precision	Intra-Assay CV: 4.2% Inter-Assay CV: 7.4%
Alternate Names	LGP120; CD107a; LAMPA; CD antigen CD107a; Lysosome-associated membrane glycoprotein 1; CD107 antigen-like family member A; LAMP-1; Lysosome-associated membrane protein 1

Application Instructions

Assay Time	~ 5 hours
------------	-----------

Properties

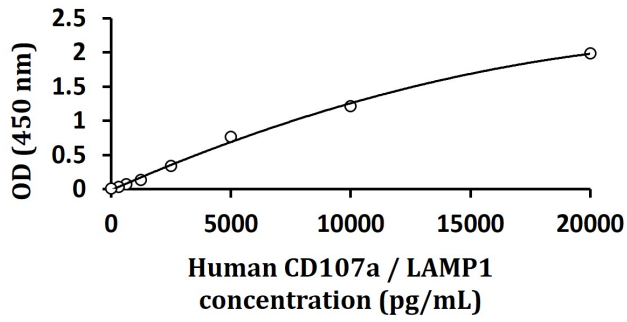
Form	96 well
Storage instruction	Store the kit at 2-8°C. Keep microplate wells sealed in a dry bag with desiccants. Do not expose test reagents to heat, sun or strong light during storage and usage. Please refer to the product user manual for detail temperatures of the components.
Note	For laboratory research only, not for drug, diagnostic or other use.

Bioinformation

Gene Symbol	LAMP1
Gene Full Name	lysosomal-associated membrane protein 1
Background	The protein encoded by this gene is a member of a family of membrane glycoproteins. This glycoprotein provides selectins with carbohydrate ligands. It may also play a role in tumor cell metastasis. [provided by RefSeq, Jul 2008]
Function	Presents carbohydrate ligands to selectins. Also implicated in tumor cell metastasis. [UniProt]

Research Area	Cancer antibody; Cell Death antibody; Controls and Markers antibody; Developmental Biology antibody; Metabolism antibody; Neuroscience antibody; Signaling Transduction antibody; Lysosome Marker antibody
PTM	O- and N-glycosylated; some of the 18 N-linked glycans are polylactosaminoglycans. The glycosylation of N-76 is essential for Lassa virus entry into cells.

Images



ARG83313 Human CD107a / LAMP1 ELISA Kit standard curve image

ARG83313 Human CD107a / LAMP1 ELISA Kit results of a typical standard run with optical density reading at 450 nm.