

## ARG83293 Human CD42b ELISA Kit

Package: 96 wells  
Store at: 4°C

### Summary

Product Description	ARG83293 Human CD42b ELISA Kit is an Enzyme Immunoassay kit for the quantification of Human CD42b in Serum, Plasma and Cell culture supernatants.
Tested Reactivity	Hu
Tested Application	ELISA
Specificity	There is no detectable cross-reactivity with other relevant proteins.
Target Name	CD42b
Conjugation	HRP
Conjugation Note	Substrate: TMB and read at 450 nm.
Sensitivity	15 pg/ml
Detection Range	156 pg/ml - 10,000 pg/ml
Sample Type	Serum, Plasma and Cell culture supernatants
Precision	Intra-Assay CV: 4.4% Inter-Assay CV: 4.8%
Alternate Names	CD antigen CD42b; Antigen CD42b-alpha; DBPLT3; VWDP; CD42B; GP-Ib alpha; Glycoprotein Ibalpha; BDPLT1; BSS; CD42b-alpha; GPIbA; GPIb-alpha; Platelet glycoprotein Ib alpha chain; BDPLT3; GP1B

### Application Instructions

Assay Time	~ 5 hours
------------	-----------

### Properties

Form	96 well
Storage instruction	Store the kit at 2-8°C. Keep microplate wells sealed in a dry bag with desiccants. Do not expose test reagents to heat, sun or strong light during storage and usage. Please refer to the product user manual for detail temperatures of the components.
Note	For laboratory research only, not for drug, diagnostic or other use.

### Bioinformation

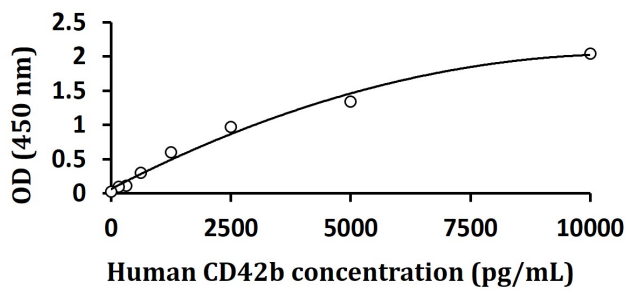
Gene Symbol	GP1BA
Gene Full Name	glycoprotein Ib (platelet), alpha polypeptide
Background	Glycoprotein Ib (GP Ib) is a platelet surface membrane glycoprotein composed of a heterodimer, an alpha chain and a beta chain, that is linked by disulfide bonds. The Gp Ib functions as a receptor for von Willebrand factor (VWF). The complete receptor complex includes noncovalent association of the alpha and beta subunits with platelet glycoprotein IX and platelet glycoprotein V. The binding of the GP Ib-IX-V complex to VWF facilitates initial platelet adhesion to vascular subendothelium after vascular injury, and also initiates signaling events within the platelet that lead to enhanced platelet activation,

thrombosis, and hemostasis. This gene encodes the alpha subunit. Mutations in this gene result in Bernard-Soulier syndromes and platelet-type von Willebrand disease. The coding region of this gene is known to contain a polymorphic variable number tandem repeat (VNTR) domain that is associated with susceptibility to nonarteritic anterior ischemic optic neuropathy. [provided by RefSeq, Oct 2013]

Function	GP-Ib, a surface membrane protein of platelets, participates in the formation of platelet plugs by binding to the A1 domain of vWF, which is already bound to the subendothelium. [UniProt]
PTM	Glycosylation, which is approximately coextensive with the extracellular part of the molecule, is cleaved off by calpain during platelet lysis. [UniProt]
Cellular Localization	Membrane; Single-pass type I membrane protein. [UniProt]

## Images

---



ARG83293 Human CD42b ELISA Kit standard curve image

ARG83293 Human CD42b ELISA Kit results of a typical standard run with optical density reading at 450 nm.

---