

## ARG83283 Human Factor XI ELISA Kit

Package: 96 wells  
Store at: 4°C

### Summary

Product Description	ARG83283 Human Factor XI ELISA Kit is an Enzyme Immunoassay kit for the quantification of Human Factor XI in Serum, Plasma and Cell culture supernatants.
Tested Reactivity	Hu
Tested Application	ELISA
Specificity	There is no detectable cross-reactivity with other relevant proteins.
Target Name	Factor XI
Conjugation	HRP
Conjugation Note	Substrate: TMB and read at 450 nm.
Sensitivity	25 pg/ml
Detection Range	0.78 ng/ml - 50 ng/ml
Sample Type	Serum, Plasma and Cell culture supernatants
Precision	Intra-Assay CV: 4.8% Inter-Assay CV: 5.2%
Alternate Names	F11; Coagulation Factor XI; FXI; Plasma Thromboplastin Antecedent; PTA; Coagulation Factor XI; EC 3.4.21.27; EC 3.4.21

### Application Instructions

Assay Time	~ 5 hours
------------	-----------

### Properties

Form	96 well
Storage instruction	Store the kit at 2-8°C. Keep microplate wells sealed in a dry bag with desiccants. Do not expose test reagents to heat, sun or strong light during storage and usage. Please refer to the product user manual for detail temperatures of the components.
Note	For laboratory research only, not for drug, diagnostic or other use.

### Bioinformation

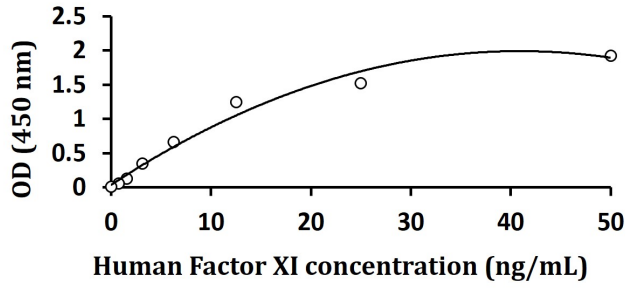
Gene Symbol	F11
Gene Full Name	Coagulation Factor XI
Background	This gene encodes coagulation factor XI of the blood coagulation cascade. This protein is present in plasma as a zymogen, which is a unique plasma coagulation enzyme because it exists as a homodimer consisting of two identical polypeptide chains linked by disulfide bonds. During activation of the plasma factor XI, an internal peptide bond is cleaved by factor XIIa (or XII) in each of the two chains, resulting in activated factor XIa, a serine protease composed of two heavy and two light chains held together by disulfide bonds. This activated plasma factor XI triggers the middle phase of the intrinsic pathway of

blood coagulation by activating factor IX. Defects in this factor lead to Rosenthal syndrome, a blood coagulation abnormality.

Function	Factor XI triggers the middle phase of the intrinsic pathway of blood coagulation by activating factor IX.
PTM	Disulfide bond, Glycoprotein
Cellular Localization	Secreted

## Images

---



ARG83283 Human Factor XI ELISA standard curve image

ARG83283 Human Factor XI ELISA results of a typical standard run with optical density reading at 450 nm.