

ARG83275 Human ENPP7 ELISA Kit

Package: 96 wells
Store at: 4°C

Summary

Product Description	ARG83275 Human ENPP7 ELISA Kit is an Enzyme Immunoassay kit for the quantification of Human ENPP7 in Serum, Plasma and Cell culture supernatants.
Tested Reactivity	Hu
Tested Application	ELISA
Specificity	There is no detectable cross-reactivity with other relevant proteins.
Target Name	ENPP7
Conjugation	HRP
Conjugation Note	Substrate: TMB and read at 450 nm.
Sensitivity	13 pg/ml
Detection Range	93.7 pg/ml - 6,000 pg/ml
Sample Type	Serum, Plasma and Cell culture supernatants
Precision	Intra-Assay CV: 5.5% Inter-Assay CV: 5.0%
Alternate Names	ENPP7; Ectonucleotide Pyrophosphatase/Phosphodiesterase 7; Alk-SMase; NPP7; Ectonucleotide Pyrophosphatase/Phosphodiesterase Family Member 7; Alkaline Sphingomyelin Phosphodiesterase; Intestinal Alkaline Sphingomyelinase; Alkaline Sphingomyelinase; E-NPP 7; NPP-7; EC 3.1.4.12; ALK-SMase

Application Instructions

Assay Time	~ 5 hours
------------	-----------

Properties

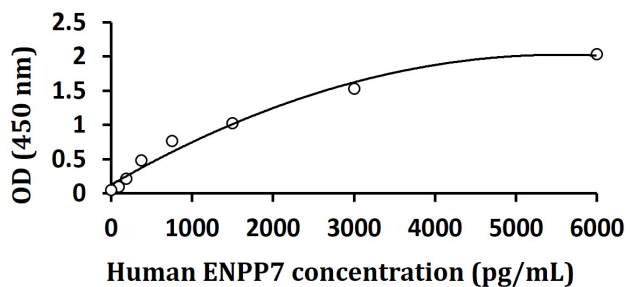
Form	96 well
Storage instruction	Store the kit at 2-8°C. Keep microplate wells sealed in a dry bag with desiccants. Do not expose test reagents to heat, sun or strong light during storage and usage. Please refer to the product user manual for detail temperatures of the components.
Note	For laboratory research only, not for drug, diagnostic or other use.

Bioinformation

Gene Symbol	ENPP7
Gene Full Name	Ectonucleotide Pyrophosphatase/Phosphodiesterase 7
Background	The protein encoded by this gene is an intestinal alkaline sphingomyelin phosphodiesterase that converts sphingomyelin to ceramide and phosphocholine. The encoded protein is anchored in the cell membrane, and it may function to protect the intestinal mucosa from inflammation and tumorigenesis. This protein is glycosylated and also exhibits lysophosphatidylcholine hydrolase activity.

Function	May promote cholesterol absorption by affecting the levels of sphingomyelin derived from either diet or endogenous sources, in the intestinal lumen (By similarity).
PTM	Glycoprotein
Cellular Localization	Cell membrane, Membrane

Images



ARG83275 Human ENPP7 ELISA Kit standard curve image

ARG83275 Human ENPP7 ELISA Kit results of a typical standard run with optical density reading at 450 nm.
