

ARG83267 Human DCBLD2 ELISA Kit

Package: 96 wells
Store at: 4°C

Summary

Product Description	ARG83267 Human DCBLD2 ELISA Kit is an Enzyme Immunoassay kit for the quantification of Human DCBLD2 in Serum, Plasma and Cell culture supernatants.
Tested Reactivity	Hu
Tested Application	ELISA
Specificity	There is no detectable cross-reactivity with other relevant proteins.
Target Name	DCBLD2
Conjugation	HRP
Conjugation Note	Substrate: TMB and read at 450 nm.
Sensitivity	13 pg/ml
Detection Range	31.2 pg/ml - 2,000 pg/ml
Sample Type	Serum, Plasma and Cell culture supernatants
Precision	Intra-Assay CV: 4.1% Inter-Assay CV: 6.3%
Alternate Names	DCBLD2; Discoidin, CUB And LCCL Domain Containing 2; CLCP1; ESDN; CUB, LCCL And Coagulation Factor V/VIII-Homology Domains Protein 1; Endothelial And Smooth Muscle Cell-Derived Neuropilin-Like Protein; Discoidin, CUB And LCCL Domain-Containing Protein 2; Coagulation Factor V/VIII-Homology Domains Protein 1; 1700055P21Rik

Application Instructions

Assay Time	~ 5 hours
------------	-----------

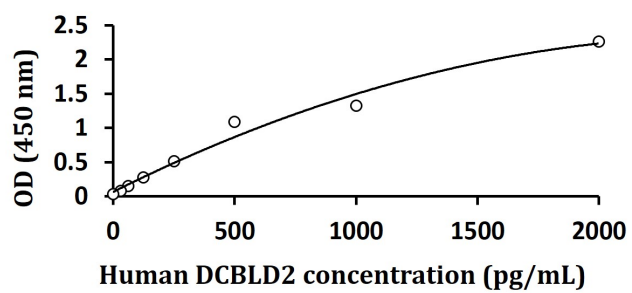
Properties

Form	96 well
Storage instruction	Store the kit at 2-8°C. Keep microplate wells sealed in a dry bag with desiccants. Do not expose test reagents to heat, sun or strong light during storage and usage. Please refer to the product user manual for detail temperatures of the components.
Note	For laboratory research only, not for drug, diagnostic or other use.

Bioinformation

Gene Symbol	DCBLD2
Gene Full Name	Discoidin, CUB And LCCL Domain Containing 2
Background	Involved in negative regulation of cell growth and wound healing. Located in cell surface. Is integral component of plasma membrane.
PTM	Disulfide bond, Glycoprotein, Phosphoprotein

Images



ARG83267 Human DCBLD2 ELISA Kit standard curve image

ARG83267 Human DCBLD2 ELISA Kit results of a typical standard run with optical density reading at 450 nm.