

ARG83258 Human CSPG5 ELISA Kit

Package: 96 wells
Store at: 4°C

Summary

Product Description	ARG83258 Human CSPG5 ELISA Kit is an Enzyme Immunoassay kit for the quantification of Human CSPG5 in Serum, Plasma and Cell culture supernatants.
Tested Reactivity	Hu
Tested Application	ELISA
Specificity	There is no detectable cross-reactivity with other relevant proteins.
Target Name	CSPG5
Conjugation	HRP
Conjugation Note	Substrate: TMB and read at 450 nm.
Sensitivity	13 pg/ml
Detection Range	15.6 pg/ml - 1,000 pg/ml
Sample Type	Serum, Plasma and Cell culture supernatants
Precision	Intra-Assay CV: 5.4% Inter-Assay CV: 6.6%
Alternate Names	CSPG5; Chondroitin Sulfate Proteoglycan 5; NGC; Acidic Leucine-Rich EGF-Like Domain-Containing Brain Protein; Chondroitin Sulfate Proteoglycan 5 (Neuroglycan C); Neuroglycan C; CALEB

Application Instructions

Assay Time ~ 5 hours

Properties

Form	96 well
Storage instruction	Store the kit at 2-8°C. Keep microplate wells sealed in a dry bag with desiccants. Do not expose test reagents to heat, sun or strong light during storage and usage. Please refer to the product user manual for detail temperatures of the components.
Note	For laboratory research only, not for drug, diagnostic or other use.

Bioinformation

Gene Symbol	CSPG5
Gene Full Name	Chondroitin Sulfate Proteoglycan 5
Background	The protein encoded by this gene is a proteoglycan that may function as a neural growth and differentiation factor. Several transcript variants encoding different isoforms have been found for this gene.
Function	May function as a growth and differentiation factor involved in neuritogenesis. May induce ERBB3 activation.

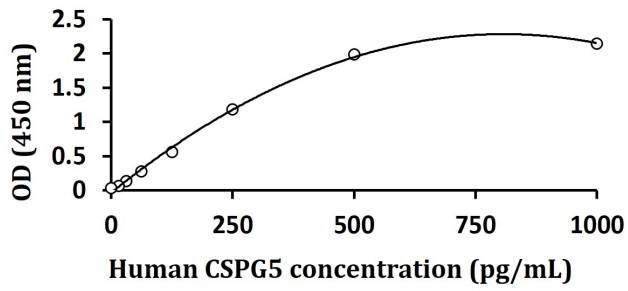
PTM

Disulfide bond, Glycoprotein, Phosphoprotein, Proteoglycan

Cellular Localization

Cell membrane, Endoplasmic reticulum, Golgi apparatus, Membrane, Secreted, Synapse

Images



ARG83258 Human CSPG5 ELISA Kit standard curve image

ARG83258 Human CSPG5 ELISA Kit results of a typical standard run with optical density reading at 450 nm.
