

## ARG83256 Human IL3RB ELISA Kit

Package: 96 wells  
Store at: 4°C

### Summary

Product Description	ARG83256 Human IL3RB ELISA Kit is an Enzyme Immunoassay kit for the quantification of Human IL3RB in Serum, Plasma and Cell culture supernatants.
Tested Reactivity	Hu
Tested Application	ELISA
Specificity	There is no detectable cross-reactivity with other relevant proteins.
Target Name	IL3RB
Conjugation	HRP
Conjugation Note	Substrate: TMB and read at 450 nm.
Sensitivity	13 pg/ml
Detection Range	15.6 pg/ml - 1,000 pg/ml
Sample Type	Serum, Plasma and Cell culture supernatants
Precision	Intra-Assay CV: 5.6% Inter-Assay CV: 7.2%
Alternate Names	IL5RB; CDw131; CD antigen CD131; CD131; IL3RB; SMDP5; GM-CSF/IL-3/IL-5 receptor common beta subunit; Cytokine receptor common subunit beta

### Application Instructions

Assay Time	~ 5 hours
------------	-----------

### Properties

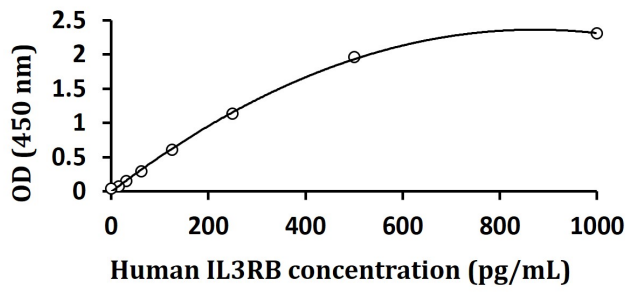
Form	96 well
Storage instruction	Store the kit at 2-8°C. Keep microplate wells sealed in a dry bag with desiccants. Do not expose test reagents to heat, sun or strong light during storage and usage. Please refer to the product user manual for detail temperatures of the components.
Note	For laboratory research only, not for drug, diagnostic or other use.

### Bioinformation

Gene Symbol	CSF2RB
Gene Full Name	colony stimulating factor 2 receptor, beta, low-affinity (granulocyte-macrophage)
Background	The protein encoded by this gene is the common beta chain of the high affinity receptor for IL-3, IL-5 and CSF. Defects in this gene have been reported to be associated with protein alveolar proteinosis (PAP). [provided by RefSeq, Jul 2008]
Function	High affinity receptor for interleukin-3, interleukin-5 and granulocyte-macrophage colony-stimulating factor. [UniProt]

Images

---



ARG83256 Human IL3RB ELISA Kit standard curve image

ARG83256 Human IL3RB ELISA Kit results of a typical standard run with optical density reading at 450 nm.

---