

## ARG83253 Human CHRDL2 ELISA Kit

Package: 96 wells  
Store at: 4°C

### Summary

Product Description	ARG83253 Human CHRDL2 ELISA Kit is an Enzyme Immunoassay kit for the quantification of Human CHRDL2 in Serum, Plasma and Cell culture supernatants.
Tested Reactivity	Hu
Tested Application	ELISA
Specificity	There is no detectable cross-reactivity with other relevant proteins.
Target Name	CHRDL2
Conjugation	HRP
Conjugation Note	Substrate: TMB and read at 450 nm.
Sensitivity	13 pg/ml
Detection Range	93.7 pg/ml - 6,000 pg/ml
Sample Type	Serum, Plasma and Cell culture supernatants
Precision	Intra-Assay CV: 5.0% Inter-Assay CV: 4.7%
Alternate Names	CHRDL2; Chordin Like 2; BNF1; Breast Tumor Novel Factor 1; Chordin-Related Protein 2; Chordin-Like Protein 2; CHL2; BNF-1

### Application Instructions

Assay Time	~ 5 hours
------------	-----------

### Properties

Form	96 well
Storage instruction	Store the kit at 2-8°C. Keep microplate wells sealed in a dry bag with desiccants. Do not expose test reagents to heat, sun or strong light during storage and usage. Please refer to the product user manual for detail temperatures of the components.
Note	For laboratory research only, not for drug, diagnostic or other use.

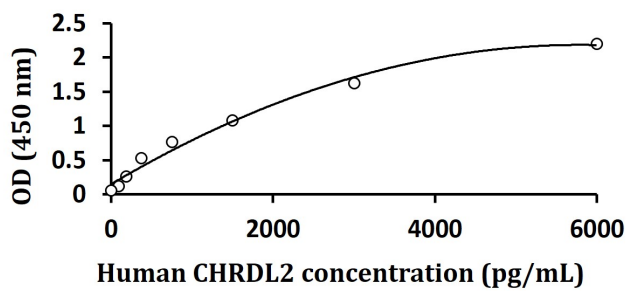
### Bioinformation

Gene Symbol	CHRDL2
Gene Full Name	Chordin Like 2
Background	This gene encodes a member of the chordin family of proteins. Chordin family members are secreted proteins that share a cysteine-rich pro-collagen repeat domain and associate with members of the transforming growth factor beta superfamily. In vitro assays demonstrate a direct interaction between the encoded protein and human activin A. This gene is expressed in many tissues including osteoblasts, where it is differentially expressed during differentiation. In addition, its expression is upregulated in human osteoarthritic joint cartilage, suggesting a role in adult cartilage regeneration.

Function	May inhibit BMPs activity by blocking their interaction with their receptors. Has a negative regulator effect on the cartilage formation/regeneration from immature mesenchymal cells, by preventing or reducing the rate of matrix accumulation.
PTM	Glycoprotein, Phosphoprotein
Cellular Localization	Cytoplasm, Secreted

## Images

---



ARG83253 Human CHRDL2 ELISA Kit standard curve image

ARG83253 Human CHRDL2 ELISA Kit results of a typical standard run with optical density reading at 450 nm.