

ARG83241 Human CD302 ELISA Kit

Package: 96 wells
Store at: 4°C

Summary

Product Description	ARG83241 Human CD302 ELISA Kit is an Enzyme Immunoassay kit for the quantification of Human in Serum, Plasma and Cell culture supernatants.
Tested Reactivity	Hu
Tested Application	ELISA
Specificity	There is no detectable cross-reactivity with other relevant proteins.
Target Name	CD302
Conjugation	HRP
Conjugation Note	Substrate: TMB and read at 450 nm.
Sensitivity	15 pg/ml
Detection Range	15.6 pg/ml - 1,000 pg/ml
Sample Type	Serum, Plasma and Cell culture supernatants
Precision	Intra-Assay CV: 4.3% Inter-Assay CV: 5.1%
Alternate Names	CD302; CD302 Molecule; CLEC13A; CD302 Antigen; KIAA0022; BIMLEC; DCL-1; Type I Transmembrane C-Type Lectin Receptor DCL-1; C-Type Lectin Domain Family 13, Member A; DEC205-Associated C-Type Lectin 1; DCL1; C-Type Lectin Domain Family 13 Member A; C-Type Lectin BIMLEC

Application Instructions

Assay Time	~ 5 hours
------------	-----------

Properties

Form	96 well
Storage instruction	Store the kit at 2-8°C. Keep microplate wells sealed in a dry bag with desiccants. Do not expose test reagents to heat, sun or strong light during storage and usage. Please refer to the product user manual for detail temperatures of the components.
Note	For laboratory research only, not for drug, diagnostic or other use.

Bioinformation

Gene Symbol	CD302
Gene Full Name	CD302 Molecule
Background	CD302 is a C-type lectin receptor involved in cell adhesion and migration, as well as endocytosis and phagocytosis.
Function	Potential multifunctional C-type lectin receptor that may play roles in endocytosis and phagocytosis as well as in cell adhesion and migration.

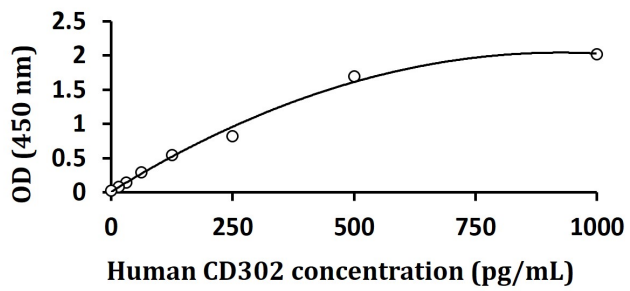
PTM

Disulfide bond, Glycoprotein

Cellular Localization

Cell projection, Cytoplasm, Membrane

Images



ARG83241 Human CD302 ELISA Kit standard curve image

ARG83241 Human CD302 ELISA Kit results of a typical standard run with optical density reading at 450 nm.