

ARG83237 Human CD58 ELISA Kit

Package: 96 wells
Store at: 4°C

Summary

Product Description	ARG83237 Human CD58 ELISA Kit is an Enzyme Immunoassay kit for the quantification of Human CD58 in Serum, Plasma and Cell culture supernatants.
Tested Reactivity	Hu
Tested Application	ELISA
Specificity	There is no detectable cross-reactivity with other relevant proteins.
Target Name	CD58
Conjugation	HRP
Conjugation Note	Substrate: TMB and read at 450 nm.
Sensitivity	25 pg/ml
Detection Range	312 pg/ml - 20,000 pg/ml
Sample Type	Serum, Plasma and Cell culture supernatants
Precision	Intra-Assay CV: 3.8% Inter-Assay CV: 4.5%
Alternate Names	CD antigen CD58; LFA3; ag3; Lymphocyte function-associated antigen 3; Surface glycoprotein LFA-3; Ag3; LFA-3

Application Instructions

Assay Time	~ 5 hours
------------	-----------

Properties

Form	96 well
Storage instruction	Store the kit at 2-8°C. Keep microplate wells sealed in a dry bag with desiccants. Do not expose test reagents to heat, sun or strong light during storage and usage. Please refer to the product user manual for detail temperatures of the components.
Note	For laboratory research only, not for drug, diagnostic or other use.

Bioinformation

Gene Symbol	CD58
Gene Full Name	CD58 molecule
Background	CD58 (LFA-3) is an immunoglobulin family adhesion molecule expressed by both hematopoietic and non-hematopoietic cells (often on antigen presenting cells) and serving as ligand of CD2. This interaction is important for T cell-mediated immunity. CD58 is expressed in transmembrane form and in GPI-anchored form; the later is constitutively associated with protein kinases whereas the transmembrane form activates kinase activity upon triggering. CD58 is a powerful tool for detection of minimal residual disease in acute lymphocytic leukemia, and for evaluation of liver damage related with

hepatitis B.

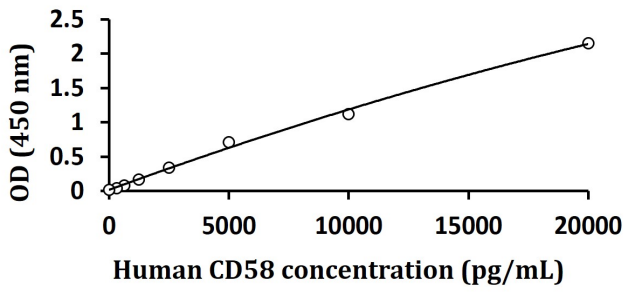
Function

Ligand of the T-lymphocyte CD2 glycoprotein. This interaction is important in mediating thymocyte interactions with thymic epithelial cells, antigen-independent and -dependent interactions of T-lymphocytes with target cells and antigen-presenting cells and the T-lymphocyte rosetting with erythrocytes. In addition, the LFA-3/CD2 interaction may prime response by both the CD2+ and LFA-3+ cells. [UniProt]

Research Area

Immune System antibody

Images



ARG83237 Human CD58 ELISA Kit standard curve image

ARG83237 Human CD58 ELISA Kit results of a typical standard run with optical density reading at 450 nm.
