

ARG83184 Equine TGF Beta 2 ELISA Kit

Package: 96 wells
Store at: 4°C

Summary

Product Description	ARG83184 Equine TGF Beta 2 ELISA Kit is an Enzyme Immunoassay kit for the quantification of Equine TGF Beta 2 in Serum, Plasma, Cell culture supernatants.
Tested Reactivity	Hrs
Tested Application	ELISA
Specificity	There is no detectable cross-reactivity with other relevant proteins.
Target Name	TGF beta 2
Conjugation	HRP
Conjugation Note	Substrate: TMB and read at 450 nm.
Sensitivity	15 pg/ml
Detection Range	31.2 pg/ml - 2,000 pg/ml
Sample Type	Serum, Plasma, Cell culture supernatants
Precision	Intra-Assay CV: 5.6% Inter-Assay CV: 6.2%
Alternate Names	TGF-beta2; Cetermin; LDS4; Polyergin; Glioblastoma-derived T-cell suppressor factor; G-TSF; Transforming growth factor beta-2; LAP; TGF-beta-2; BSC-1 cell growth inhibitor

Application Instructions

Assay Time	~ 5 hours
------------	-----------

Properties

Form	96 well
Storage instruction	Store the kit at 2-8°C. Keep microplate wells sealed in a dry bag with desiccants. Do not expose test reagents to heat, sun or strong light during storage and usage. Please refer to the product user manual for detail temperatures of the components.
Note	For laboratory research only, not for drug, diagnostic or other use.

Bioinformation

Gene Symbol	TGFB2
Gene Full Name	transforming growth factor, beta 2
Background	This gene encodes a member of the transforming growth factor beta (TGFB) family of cytokines, which are multifunctional peptides that regulate proliferation, differentiation, adhesion, migration, and other functions in many cell types by transducing their signal through combinations of transmembrane type I and type II receptors (TGFB1 and TGFB2) and their downstream effectors, the SMAD proteins. Disruption of the TGFB/SMAD pathway has been implicated in a variety of human cancers. The encoded protein is secreted and has suppressive effects of interleukin-2 dependent T-cell growth. Translocation

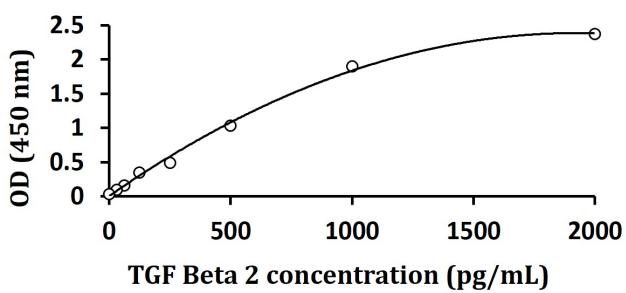
t(1;7)(q41;p21) between this gene and HDAC9 is associated with Peters' anomaly, a congenital defect of the anterior chamber of the eye. The knockout mice lacking this gene show perinatal mortality and a wide range of developmental, including cardiac, defects. Alternatively spliced transcript variants encoding different isoforms have been identified. [provided by RefSeq, Sep 2010]

Function TGF-beta 2 has suppressive effects on interleukin-2 dependent T-cell growth. [UniProt]

Highlight Related products:
[TGF beta antibodies](#); [TGF beta ELISA Kits](#); [TGF beta recombinant proteins](#);
New ELISA data calculation tool:
[Simplify the ELISA analysis by GainData](#)

PTM The precursor is cleaved into mature TGF-beta-2 and LAP, which remains non-covalently linked to mature TGF-beta-2 rendering it inactive. [UniProt]

Images



ARG83184 Equine TGF Beta 2 ELISA Kit standard curve image

ARG83184 Equine TGF Beta 2 ELISA Kit results of a typical standard run with optical density reading at 450 nm.