

## ARG83179 Rabbit Endothelin 1 ELISA Kit

Package: 96 wells  
Store at: 4°C

### Summary

Product Description	ARG83179 Rabbit Endothelin 1 ELISA Kit is an Enzyme Immunoassay kit for the quantification of Endothelin 1 in Serum, Plasma, Cell culture supernatants.
Tested Reactivity	Rb
Tested Application	ELISA
Specificity	There is no detectable cross-reactivity with other relevant proteins.
Target Name	Endothelin 1
Conjugation	HRP
Conjugation Note	Substrate: TMB and read at 450 nm.
Sensitivity	1 pg/ml
Detection Range	3.9 pg/ml - 250 pg/ml
Sample Type	Serum, Plasma, Cell culture supernatants
Precision	Intra-Assay CV: 4.7% Inter-Assay CV: 6.9%
Alternate Names	HDLCQ7; ET1; PPET1; ET-1; Preproendothelin-1; ARCND3; Endothelin-1; QME

### Application Instructions

Assay Time	~ 5 hours
------------	-----------

### Properties

Form	96 well
Storage instruction	Store the kit at 2-8°C. Keep microplate wells sealed in a dry bag with desiccants. Do not expose test reagents to heat, sun or strong light during storage and usage. Please refer to the product user manual for detail temperatures of the components.
Note	For laboratory research only, not for drug, diagnostic or other use.

### Bioinformation

Gene Symbol	EDN1
Gene Full Name	endothelin 1
Background	The protein encoded by this gene is proteolytically processed to release a secreted peptide termed endothelin 1. This peptide is a potent vasoconstrictor and is produced by vascular endothelial cells. Endothelin 1 also can affect the central nervous system. Two transcript variants encoding different isoforms have been found for this gene. [provided by RefSeq, Nov 2009]
Function	Endothelins are endothelium-derived vasoconstrictor peptides. [UniProt]

Highlight

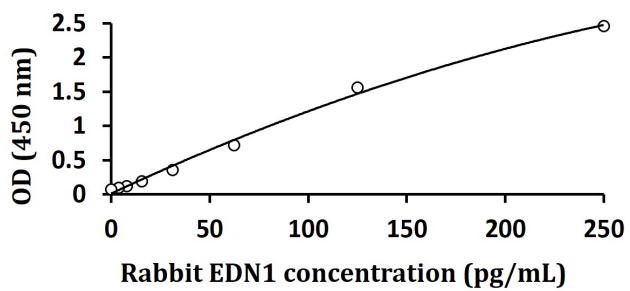
Related products:  
[Endothelin antibodies](#); [Endothelin ELISA Kits](#);  
New ELISA data calculation tool:  
[Simplify the ELISA analysis by GainData](#)

Cellular Localization

Secreted. [UniProt]

Images

---



ARG83179 Rabbit Endothelin 1 ELISA Kit standard curve image

ARG83179 Rabbit Endothelin 1 ELISA Kit results of a typical standard run with optical density reading at 450 nm.