

ARG83170 Monkey KGF ELISA Kit

Package: 96 wells

Store at: 4°C

Summary

Product Description	ARG83170 Monkey KGF ELISA Kit is an Enzyme Immunoassay kit for the quantification of Monkey KGF in Serum, Plasma and Cell culture supernatants.
Tested Reactivity	Mk
Tested Application	ELISA
Specificity	There is no detectable cross-reactivity with other relevant proteins.
Target Name	KGF
Conjugation	HRP
Conjugation Note	Substrate: TMB and read at 450 nm.
Sensitivity	5 pg/ml
Detection Range	31.2 pg/ml - 2,000 pg/ml
Sample Type	Serum, Plasma and Cell culture supernatants
Precision	Intra-Assay CV: 4.6% Inter-Assay CV: 7.1%
Alternate Names	FGF-7; Fibroblast growth factor 7; Heparin-binding growth factor 7; KGF; Keratinocyte growth factor; HBGF-7

Application Instructions

Assay Time	~ 5 hours
------------	-----------

Properties

Form	96 well
Storage instruction	Store the kit at 2-8°C. Keep microplate wells sealed in a dry bag with desiccants. Do not expose test reagents to heat, sun or strong light during storage and usage. Please refer to the product user manual for detail temperatures of the components.
Note	For laboratory research only, not for drug, diagnostic or other use.

Bioinformation

Gene Symbol	FGF7
Gene Full Name	fibroblast growth factor 7
Background	The protein encoded by this gene is a member of the fibroblast growth factor (FGF) family. FGF family members possess broad mitogenic and cell survival activities, and are involved in a variety of biological processes, including embryonic development, cell growth, morphogenesis, tissue repair, tumor growth and invasion. This protein is a potent epithelial cell-specific growth factor, whose mitogenic activity is predominantly exhibited in keratinocytes but not in fibroblasts and endothelial cells. Studies of mouse and rat homologs of this gene implicated roles in morphogenesis of epithelium, reepithelialization of

wounds, hair development and early lung organogenesis. [provided by RefSeq, Jul 2008]

Function

Plays an important role in the regulation of embryonic development, cell proliferation and cell differentiation. Required for normal branching morphogenesis. Growth factor active on keratinocytes. Possible major paracrine effector of normal epithelial cell proliferation. [UniProt]

Highlight

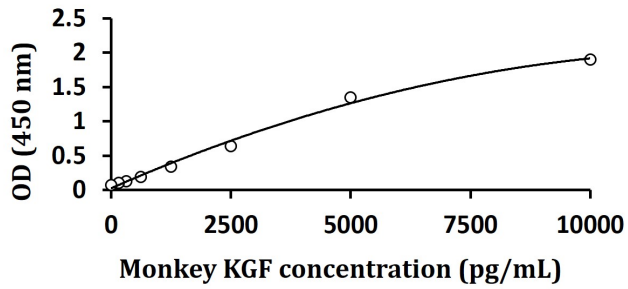
Related products:

[KGF antibodies](#); [KGF ELISA Kits](#);

New ELISA data calculation tool:

[Simplify the ELISA analysis by GainData](#)

Images



ARG83170 Monkey KGF ELISA Kit standard curve image

ARG83170 Monkey KGF ELISA Kit results of a typical standard run with optical density reading at 450 nm.
