

ARG83169 Monkey MIF ELISA Kit

Package: 96 wells
Store at: 4°C

Summary

Product Description	ARG83169 Monkey MIF ELISA Kit is an Enzyme Immunoassay kit for the quantification of Monkey MIF in Serum, Plasma, Monkey Milk and Cell culture supernatants.
Tested Reactivity	Mk
Tested Application	ELISA
Specificity	There is no detectable cross-reactivity with other relevant proteins.
Target Name	MIF
Conjugation	HRP
Conjugation Note	Substrate: TMB and read at 450 nm.
Sensitivity	25 pg/ml
Detection Range	156 pg/ml - 10,000 pg/ml
Sample Type	Serum, Plasma, Monkey Milk and Cell culture supernatants
Precision	Intra-Assay CV: 5.1% Inter-Assay CV: 6.4%
Alternate Names	Phenylpyruvate tautomerase; L-dopachrome tautomerase; GLIF; L-dopachrome isomerase; MMIF; Macrophage migration inhibitory factor; MIF; GIF; EC 5.3.2.1; Glycosylation-inhibiting factor; EC 5.3.3.12

Application Instructions

Assay Time	~ 5 hours
------------	-----------

Properties

Form	96 well
Storage instruction	Store the kit at 2-8°C. Keep microplate wells sealed in a dry bag with desiccants. Do not expose test reagents to heat, sun or strong light during storage and usage. Please refer to the product user manual for detail temperatures of the components.
Note	For laboratory research only, not for drug, diagnostic or other use.

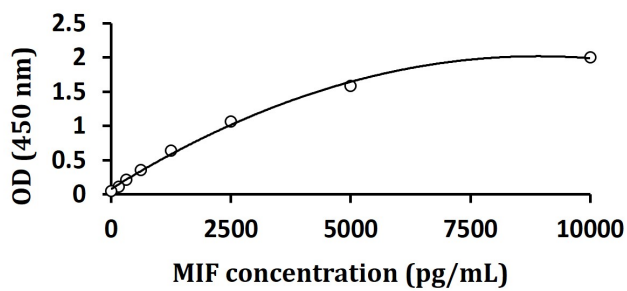
Bioinformation

Gene Symbol	MIF
Gene Full Name	macrophage migration inhibitory factor (glycosylation-inhibiting factor)
Background	This gene encodes a lymphokine involved in cell-mediated immunity, immunoregulation, and inflammation. It plays a role in the regulation of macrophage function in host defense through the suppression of anti-inflammatory effects of glucocorticoids. This lymphokine and the JAB1 protein form a complex in the cytosol near the peripheral plasma membrane, which may indicate an additional role in integrin signaling pathways. [provided by RefSeq, Jul 2008]

Function Pro-inflammatory cytokine. Involved in the innate immune response to bacterial pathogens. The expression of MIF at sites of inflammation suggests a role as mediator in regulating the function of macrophages in host defense. Counteracts the anti-inflammatory activity of glucocorticoids. Has phenylpyruvate tautomerase and dopachrome tautomerase activity (in vitro), but the physiological substrate is not known. It is not clear whether the tautomerase activity has any physiological relevance, and whether it is important for cytokine activity. [UniProt]

Highlight Related products:
[MIF antibodies](#); [MIF ELISA Kits](#); [MIF Duos / Panels](#);
New ELISA data calculation tool:
[Simplify the ELISA analysis by GainData](#)

Images



ARG83169 Monkey MIF ELISA Kit standard curve image

ARG83169 Monkey MIF ELISA Kit results of a typical standard run with optical density reading at 450 nm.
