

## ARG83163 Monkey TIMP3 ELISA Kit

Package: 96 wells  
Store at: 4°C

### Summary

Product Description	ARG83163 Monkey TIMP3 ELISA Kit is an Enzyme Immunoassay kit for the quantification of Monkey TIMP3 in Serum, Plasma, Saliva and Cell culture supernatants.
Tested Reactivity	Mk
Tested Application	ELISA
Specificity	There is no detectable cross-reactivity with other relevant proteins.
Target Name	TIMP3
Conjugation	HRP
Conjugation Note	Substrate: TMB and read at 450 nm.
Sensitivity	3 pg/ml
Detection Range	156 pg/ml - 10,000 pg/ml
Sample Type	Serum, Plasma, Saliva and Cell culture supernatants
Precision	Intra-Assay CV: 4.5% Inter-Assay CV: 5.1%
Alternate Names	KIM-3; TIM3; TIMD-3; Tim-3; TIM-3; CD366; T-cell immunoglobulin and mucin domain-containing protein 3; TIMD3; T-cell membrane protein 3; HAVcr-2; T-cell immunoglobulin mucin receptor 3; Hepatitis A virus cellular receptor 2

### Application Instructions

Assay Time	~ 5 hours
------------	-----------

### Properties

Form	96 well
Storage instruction	Store the kit at 2-8°C. Keep microplate wells sealed in a dry bag with desiccants. Do not expose test reagents to heat, sun or strong light during storage and usage. Please refer to the product user manual for detail temperatures of the components.
Note	For laboratory research only, not for drug, diagnostic or other use.

### Bioinformation

Gene Symbol	HAVCR2
Gene Full Name	hepatitis A virus cellular receptor 2
Background	The protein encoded by this gene belongs to the immunoglobulin superfamily, and TIM family of proteins. CD4-positive T helper lymphocytes can be divided into types 1 (Th1) and 2 (Th2) on the basis of their cytokine secretion patterns. Th1 cells are involved in cell-mediated immunity to intracellular pathogens and delayed-type hypersensitivity reactions, whereas, Th2 cells are involved in the control of extracellular helminthic infections and the promotion of atopic and allergic diseases. This protein is a

Th1-specific cell surface protein that regulates macrophage activation, and inhibits Th1-mediated auto- and alloimmune responses, and promotes immunological tolerance. [provided by RefSeq, Sep 2011]

Function

Regulates macrophage activation. Inhibits T-helper type 1 lymphocyte (Th1)-mediated auto- and alloimmune responses and promotes immunological tolerance. May be also involved in T-cell homing. Receptor for LGALS9. [UniProt]

Highlight

Related products:  
[TIM3 antibodies](#); [TIM3 ELISA Kits](#);  
New ELISA data calculation tool:  
[Simplify the ELISA analysis by GainData](#)

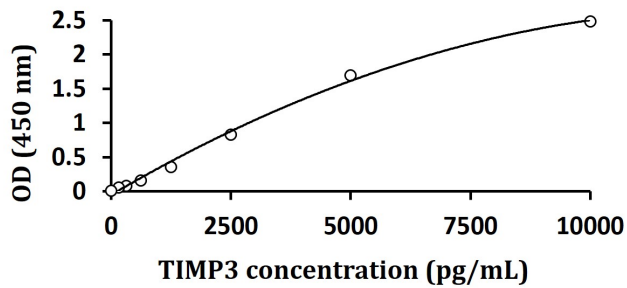
PTM

O-glycosylated with core 1 or possibly core 8 glycans.

Phosphorylated on tyrosine residues; modestly increased after TCR/CD28 stimulation. Can be phosphorylated in the cytoplasmic domain by FYN (By similarity). Phosphorylation at Tyr-265 is increased by stimulation with ligand LGALS9. [UniProt]

## Images

---



ARG83163 Monkey TIMP3 ELISA Kit standard curve image

ARG83163 Monkey TIMP3 ELISA Kit results of a typical standard run with optical density reading at 450 nm.

---