

## ARG83126 Rabbit BMP5 ELISA Kit

Package: 96 wells  
Store at: 4°C

### Summary

Product Description	ARG83126 Rabbit BMP5 ELISA Kit is an Enzyme Immunoassay kit for the quantification of Rabbit BMP5 in Serum, Bone tissue, Cell culture supernatants.
Tested Reactivity	Rb
Tested Application	ELISA
Specificity	There is no detectable cross-reactivity with other relevant proteins.
Target Name	BMP5
Conjugation	HRP
Conjugation Note	Substrate: TMB and read at 450 nm.
Sensitivity	15 pg/ml
Detection Range	156 pg/ml - 10,000 pg/ml
Sample Type	Serum, Bone tissue, Cell culture supernatants.
Precision	Intra-Assay CV: 5.3% Inter-Assay CV: 5.7%
Alternate Names	BMP-5; Bone morphogenetic protein 5

### Application Instructions

Assay Time ~ 5 hours

### Properties

Form	96 well
Storage instruction	Store the kit at 2-8°C. Keep microplate wells sealed in a dry bag with desiccants. Do not expose test reagents to heat, sun or strong light during storage and usage. Please refer to the product user manual for detail temperatures of the components.
Note	For laboratory research only, not for drug, diagnostic or other use.

### Bioinformation

Gene Symbol	BMP5
Gene Full Name	bone morphogenetic protein 5
Background	This gene encodes a member of the bone morphogenetic protein family which is part of the transforming growth factor-beta superfamily. The superfamily includes large families of growth and differentiation factors. Bone morphogenetic proteins were originally identified by an ability of demineralized bone extract to induce endochondral osteogenesis in vivo in an extraskeletal site. These proteins are synthesized as prepropeptides, cleaved, and then processed into dimeric proteins. This protein may act as an important signaling molecule within the trabecular meshwork and optic nerve head, and may play a potential role in glaucoma pathogenesis. This gene is differentially regulated

during the formation of various tumors. [provided by RefSeq, Jul 2008]

Function

Induces cartilage and bone formation. [UniProt]

Highlight

Related products:

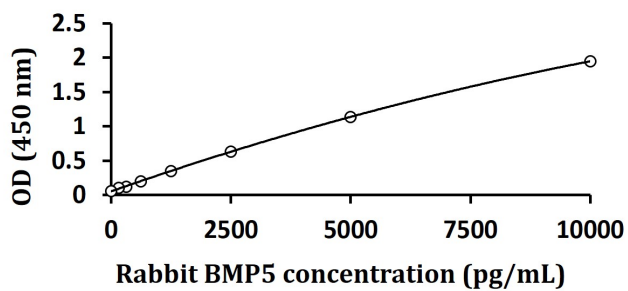
[BMP antibodies](#); [BMP ELISA Kits](#); [BMP recombinant proteins](#);

New ELISA data calculation tool:

[Simplify the ELISA analysis by GainData](#)

## Images

---



ARG83126 Rabbit BMP5 ELISA Kit standard curve image

ARG83126 Rabbit BMP5 ELISA Kit results of a typical standard run with optical density reading at 450 nm.

---