

## ARG83118 Equine BDNF ELISA Kit

Package: 96 wells  
Store at: 4°C

### Summary

Product Description	ARG83118 Equine BDNF ELISA Kit is an Enzyme Immunoassay kit for the quantification of Equine in Serum, Plasma (heparin, EDTA, citrate), Cell culture supernatants.
Tested Reactivity	Hrs
Tested Application	ELISA
Specificity	There is no detectable cross-reactivity with other relevant proteins.
Target Name	BDNF
Conjugation	HRP
Conjugation Note	Substrate: TMB and read at 450 nm.
Sensitivity	15 pg/ml
Detection Range	31.2 pg/ml - 2,000 pg/ml
Sample Type	Serum, Plasma, Cell culture supernatants
Precision	Intra-Assay CV: 4.1% Inter-Assay CV: 7.4%
Alternate Names	Brain-derived neurotrophic factor; Abrineurin; BULN2; ANON2; BDNF

### Application Instructions

Assay Time	~ 5 hours
------------	-----------

### Properties

Form	96 well
Storage instruction	Store the kit at 2-8°C. Keep microplate wells sealed in a dry bag with desiccants. Do not expose test reagents to heat, sun or strong light during storage and usage. Please refer to the product user manual for detail temperatures of the components.
Note	For laboratory research only, not for drug, diagnostic or other use.

### Bioinformation

Gene Symbol	BDNF
Gene Full Name	brain-derived neurotrophic factor
Background	The protein encoded by this gene is a member of the nerve growth factor family. It is induced by cortical neurons, and is necessary for survival of striatal neurons in the brain. Expression of this gene is reduced in both Alzheimer's and Huntington disease patients. This gene may play a role in the regulation of stress response and in the biology of mood disorders. Multiple transcript variants encoding distinct isoforms have been described for this gene.
Function	During development, promotes the survival and differentiation of selected neuronal populations of the

peripheral and central nervous systems. Participates in axonal growth, pathfinding and in the modulation of dendritic growth and morphology. Major regulator of synaptic transmission and plasticity at adult synapses in many regions of the CNS. The versatility of BDNF is emphasized by its contribution to a range of adaptive neuronal responses including long-term potentiation (LTP), long-term depression (LTD), certain forms of short-term synaptic plasticity, as well as homeostatic regulation of intrinsic neuronal excitability.

Highlight

Related products:  
[BDNF antibodies](#); [BDNF ELISA Kits](#); [BDNF recombinant proteins](#);  
Related news:  
[The role of HDGF in tumor angiogenesis](#)  
New ELISA data calculation tool:  
[Simplify the ELISA analysis by GainData](#)

PTM

The propeptide is N-glycosylated and glycosulfated.

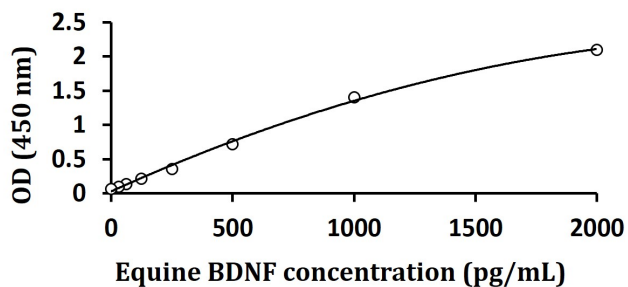
Converted into mature BDNF by plasmin (PLG).

Cellular Localization

Secreted.

Images

---



ARG83118 Equine BDNF ELISA Kit standard curve image

ARG83118 Equine BDNF ELISA Kit results of a typical standard run with optical density reading at 450 nm.

---