

ARG83016
Human CCL17 / TARC ELISA KitPackage: 96 wells
Store at: 4°C

Component

Cat. No.	Component Name	Package
ARG83016-01	Antibody-coated microplate	8 X 12 strips
ARG83016-02	Standard (Lyophilized)	3 X 0.5 ng/vial
ARG83016-03	Standard diluent buffer	20 ml
ARG83016-04	Antibody conjugate concentrate	1 vial
ARG83016-05	Antibody diluent buffer	16 ml
ARG83016-06	HRP-Streptavidin concentrate	1 vial
ARG83016-07	HRP-Streptavidin diluent buffer	16 ml
8ARG83016-0	20X Wash buffer	50 ml
ARG83016-09	TMB substrate	12 ml
ARG83016-10	STOP solution	12 ml
ARG83016-11	Plate sealer	4 strips

Summary

Product Description	ARG83016 Human CCL17 / TARC ELISA Kit is an Enzyme Immunoassay kit for the quantification of Human CCL17 / TARC in serum, plasma (heparin), ascites, urine and cell culture supernatants.
Tested Reactivity	Hu
Tested Application	ELISA
Specificity	Not cross-reacts with: Human MCP1, MIP1 alpha, MIP1 beta, RANTES, TECK. Mouse TARC.
Target Name	CCL17
Conjugation	HRP
Conjugation Note	Substrate: TMB and read at 450 nm.
Sensitivity	3.9 pg/ml
Sample Type	Serum, plasma (heparin), ascites, urine and cell culture supernatants.
Standard Range	7.8-500 pg/ml
Sample Volume	100 µl

Alternate Names CCL17, C C Motif Chemokine Ligand 17, TARC, ABCD 2, SCYA17, Small Inducible Cytokine Subfamily A (Cys-Cys), Member 17, Thymus And Activation-Regulated Chemokine, Chemokine (C C Motif) Ligand 17, Small Inducible Cytokine A17, C C Motif Chemokine 17, CC Chemokine TARC, T Cell Directed CC Chemokine, A-152E5.3

Application Instructions

Assay Time ~ 4 hours

Properties

Form 96 well

Storage instruction Store the kit at 2-8°C. Keep microplate wells sealed in a dry bag with desiccants. Do not expose test reagents to heat, sun or strong light during storage and usage. Please refer to the product user manual for detail temperatures of the components.

Note For laboratory research only, not for drug, diagnostic or other use.

Bioinformation

Gene Symbol CCL17

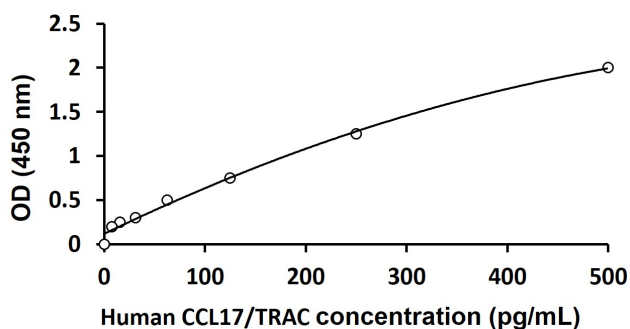
Gene Full Name C-C Motif Chemokine Ligand 17

Background This antimicrobial gene is one of several Cys-Cys (CC) cytokine genes clustered on the q arm of chromosome 16. Cytokines are a family of secreted proteins involved in immunoregulatory and inflammatory processes. The CC cytokines are proteins characterized by two adjacent cysteines. The cytokine encoded by this gene displays chemotactic activity for T lymphocytes, but not monocytes or granulocytes. The product of this gene binds to chemokine receptors CCR4 and CCR8. This chemokine plays important roles in T cell development in thymus as well as in trafficking and activation of mature T cells. [provided by RefSeq, Sep 2014]

Function Chemotactic factor for T-lymphocytes but not monocytes or granulocytes. May play a role in T-cell development in thymus and in trafficking and activation of mature T-cells. Binds to CCR4. [UniProt]

Highlight

Images



ARG83016 Human CCL17 / TARC ELISA Kit standard curve image

ARG83016 Human CCL17 / TARC ELISA Kit results of standard run with optical density reading at 450 nm