

ARG83014 Human IL 36Ra ELISA Kit

Package: 96 wells
Store at: 4°C

Summary

| | |
|---------------------|--|
| Product Description | ARG83014 Human IL 36Ra ELISA Kit is an Enzyme Immunoassay kit for the quantification of Human IL 36Ra in serum, plasma (heparin), ascites, urine and cell culture supernatants. |
| Tested Reactivity | Hu |
| Tested Application | ELISA |
| Specificity | Not cross-reacts with: Human IL1beta, IL1F7, IL1Ra, IL36 alpha, IL36 beta, IL36 gamma. Mouse IL-36Ra |
| Target Name | IL1RN |
| Conjugation | HRP |
| Conjugation Note | Substrate: TMB and read at 450 nm. |
| Sensitivity | 0.078 ng/ml |
| Sample Type | Serum, plasma (heparin), ascites, urine and cell culture supernatants. |
| Standard Range | 0.156-10 ng/ml |
| Sample Volume | 100 µl |
| Alternate Names | IL1RN , Interleukin 1 Receptor Antagonis, ICIL-1RA, IL-1RN, IL1RA, IL1F3, IRAP, Interleukin-1 Receptor Antagonist Protein, IL1 Inhibito, MGC10430, IL-1ra, Intracellular Interleukin-1 Receptor Antagonist (ICIL-1ra), Intracellular Interleukin-1 Receptor Antagonist, Intracellular IL-1 Receptor Antagonist Type II, Type II Interleukin-1 Receptor Antagonist, Anakinr, IL-1ra3, MVCD4, DIRA |

Application Instructions

Assay Time ~ 4 hours

Properties

| | |
|---------------------|--|
| Form | 96 well |
| Storage instruction | Store the kit at 2-8°C. Keep microplate wells sealed in a dry bag with desiccants. Do not expose test reagents to heat, sun or strong light during storage and usage. Please refer to the product user manual for detail temperatures of the components. |
| Note | For laboratory research only, not for drug, diagnostic or other use. |

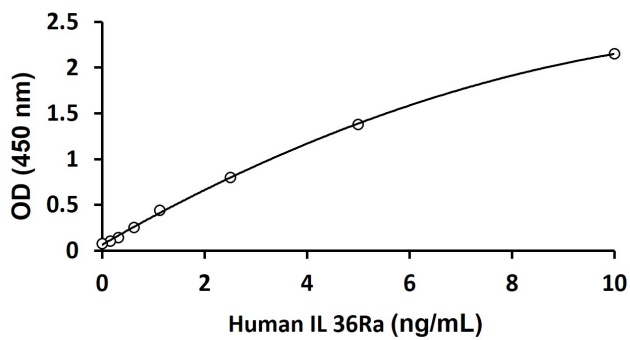
Bioinformation

| | |
|----------------|---|
| Gene Symbol | IL1RN |
| Gene Full Name | Interleukin 1 Receptor Antagonist |
| Background | The protein encoded by this gene is a member of the interleukin 1 cytokine family. This protein inhibits the activities of interleukin 1, alpha (IL1A) and interleukin 1, beta (IL1B), and modulates a variety of interleukin 1 related immune and inflammatory responses, particularly in the acute phase of infection |

and inflammation. This gene and five other closely related cytokine genes form a gene cluster spanning approximately 400 kb on chromosome 2. A polymorphism of this gene is reported to be associated with increased risk of osteoporotic fractures and gastric cancer. Several alternatively spliced transcript variants encoding distinct isoforms have been reported. [provided by RefSeq, Aug 2020]

| | |
|-----------------------|--|
| Function | Anti-inflammatory antagonist of interleukin-1 family of proinflammatory cytokines such as interleukin-1beta/IL1B and interleukin-1alpha/IL1A. Protects from immune dysregulation and uncontrolled systemic inflammation triggered by IL1 for a range of innate stimulatory agents such as pathogens. [UniProt] |
| PTM | Disulfide bond, Glycoprotein. [Uniprot] |
| Cellular Localization | Cytoplasm, Secreted. [UniProt] |

Images



ARG83014 Human IL 36Ra ELISA Kit standard curve image

ARG83014 Human IL 36Ra ELISA Kit results of standard run with optical density reading at 450 nm
