

ARG82832 Mouse CHI3L3 ELISA Kit

Package: 96 wells
Store at: 4°C

Component

Cat. No.	Component Name	Package	Temp
ARG82832-001	Antibody-coated microplate	8 X 12 strips	4°C. Unused strips should be sealed tightly in the air-tight pouch.
ARG82832-002	Standard	2 X 10 ng/vial	4°C
ARG82832-003	Standard/Sample diluent	30 ml (Ready to use)	4°C
ARG82832-004	Antibody conjugate concentrate (100X)	1 vial (100 µl)	4°C
ARG82832-005	Antibody diluent buffer	12 ml (Ready to use)	4°C
ARG82832-006	HRP-Streptavidin concentrate (100X)	1 vial (100 µl)	4°C
ARG82832-007	HRP-Streptavidin diluent buffer	12 ml (Ready to use)	4°C
ARG82832-008	25X Wash buffer	20 ml	4°C
ARG82832-009	TMB substrate	10 ml (Ready to use)	4°C (Protect from light)
ARG82832-010	STOP solution	10 ml (Ready to use)	4°C
ARG82832-011	Plate sealer	4 strips	Room temperature

Summary

Product Description	ARG82832 Mouse CHI3L3 ELISA Kit is an Enzyme Immunoassay kit for the quantification of Mouse CHI3L3 in serum, plasma (EDTA, heparin, citrate) and cell culture supernatants.
Tested Reactivity	Ms
Tested Application	ELISA
Target Name	CHI3L3
Conjugation	HRP
Conjugation Note	Substrate: TMB and read at 450 nm.
Sensitivity	0.078 ng/ml
Sample Type	Serum, plasma (EDTA, heparin, citrate) and cell culture supernatants.
Standard Range	0.156 - 10 ng/ml
Sample Volume	100 µl
Precision	Intra-Assay CV: 5.5% Inter-Assay CV: 6.5%

Alternate Names Ym1; Chi3; ECF-L; Chi3l3; AI505981

Application Instructions

Assay Time ~ 5 hours

Properties

Form 96 well

Storage instruction Store the kit at 2-8°C. Keep microplate wells sealed in a dry bag with desiccants. Do not expose test reagents to heat, sun or strong light during storage and usage. Please refer to the product user manual for detail temperatures of the components.

Note For laboratory research only, not for drug, diagnostic or other use.

Bioinformation

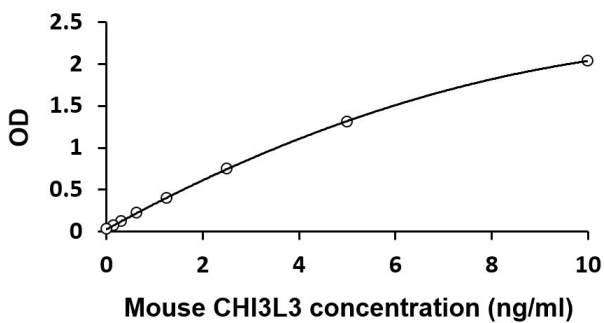
Gene Symbol Chi3

Gene Full Name chitinase-like 3

Background The protein encoded by this gene is similar to bacterial chitinases but lacks chitinase activity. The encoded protein is thought to function as a lectin and may be involved in inflammation and allergy. [provided by RefSeq, Sep 2015]

Function Lectin that binds saccharides with a free amino group, such as glucosamine or galactosamine. Binding to oligomeric saccharides is much stronger than binding to mono- or disaccharides. Also binds chitin and heparin. Has weak hexosaminidase activity but no chitinase activity. Has chemotactic activity for T-lymphocytes, bone marrow cells and eosinophils. May play a role in inflammation and allergy. [UniProt]

Images



ARG82832 Mouse CHI3L3 ELISA Kit standard curve image

ARG82832 Mouse CHI3L3 ELISA Kit results of a typical standard run with optical density reading at 450 nm.