

ARG82827 Human alpha Fetoprotein ELISA Kit

Package: 96 wells
Store at: 4°C

Component

Cat. No.	Component Name	Package	Temp
ARG82827-001	Antibody-coated microplate	8 X 12 strips	4°C. Unused strips should be sealed tightly in the air-tight pouch.
ARG82827-002	Standard	2 X 5 ng/vial	4°C
ARG82827-003	Standard/Sample diluent	30 ml (Ready to use)	4°C
ARG82827-004	Antibody conjugate concentrate (100X)	1 vial (100 µl)	4°C
ARG82827-005	Antibody diluent buffer	12 ml (Ready to use)	4°C
ARG82827-006	HRP-Streptavidin concentrate (100X)	1 vial (100 µl)	4°C
ARG82827-007	HRP-Streptavidin diluent buffer	12 ml (Ready to use)	4°C
ARG82827-008	25X Wash buffer	20 ml	4°C
ARG82827-009	TMB substrate	10 ml (Ready to use)	4°C (Protect from light)
ARG82827-010	STOP solution	10 ml (Ready to use)	4°C
ARG82827-011	Plate sealer	4 strips	Room temperature

Summary

Product Description	ARG82827 Human alpha Fetoprotein ELISA Kit is an Enzyme Immunoassay kit for the quantification of Human alpha Fetoprotein in serum, plasma (EDTA, heparin) and cell culture supernatants.
Tested Reactivity	Hu
Tested Application	ELISA
Target Name	alpha Fetoprotein
Conjugation	HRP
Conjugation Note	Substrate: TMB and read at 450 nm.
Sensitivity	39 pg/ml
Sample Type	Serum, plasma (EDTA, heparin) and cell culture supernatants.
Standard Range	78 - 5000 pg/ml
Sample Volume	100 µl
Precision	Intra-Assay CV: 5.6% Inter-Assay CV: 6.9%

Alternate Names

Alpha-fetoprotein; HPAFP; FETA; Alpha-fetoglobulin; AFPD; Alpha-1-fetoprotein

Application Instructions

Assay Time ~ 5 hours

Properties

Form 96 well

Storage instruction Store the kit at 2-8°C. Keep microplate wells sealed in a dry bag with desiccants. Do not expose test reagents to heat, sun or strong light during storage and usage. Please refer to the product user manual for detail temperatures of the components.

Note For laboratory research only, not for drug, diagnostic or other use.

Bioinformation

Gene Symbol AFP

Gene Full Name alpha-fetoprotein

Background This gene encodes alpha-fetoprotein, a major plasma protein produced by the yolk sac and the liver during fetal life. Alpha-fetoprotein expression in adults is often associated with hepatocarcinoma and with teratoma, and has prognostic value for managing advanced gastric cancer. However, hereditary persistence of alpha-fetoprotein may also be found in individuals with no obvious pathology. The protein is thought to be the fetal counterpart of serum albumin, and the alpha-fetoprotein and albumin genes are present in tandem in the same transcriptional orientation on chromosome 4. Alpha-fetoprotein is found in monomeric as well as dimeric and trimeric forms, and binds copper, nickel, fatty acids and bilirubin. The level of alpha-fetoprotein in amniotic fluid is used to measure renal loss of protein to screen for spina bifida and anencephaly. [provided by RefSeq, Oct 2019]

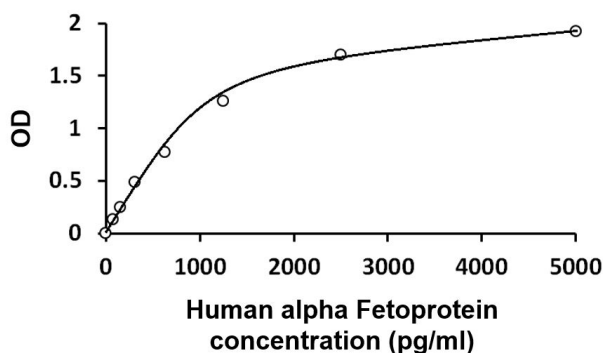
Function Binds copper, nickel, and fatty acids as well as, and bilirubin less well than, serum albumin. Only a small percentage (less than 2%) of the human AFP shows estrogen-binding properties. [UniProt]

PTM Independent studies suggest heterogeneity of the N-terminal sequence of the mature protein and of the cleavage site of the signal sequence.

Sulfated. [UniProt]

Cellular Localization Secreted. [UniProt]

Images



ARG82827 Human alpha Fetoprotein ELISA Kit standard curve image

ARG82827 Human alpha Fetoprotein ELISA Kit results of a typical standard run with optical density reading at 450 nm.