

## ARG82821 Human Growth Hormone (High sensitive) ELISA Kit

Package: 96 wells

Store at: 4°C

### Summary

Product Description	ARG82821 Human Growth Hormone (High sensitive) ELISA Kit is a high sensitive Enzyme Immunoassay kit for the quantification of Human Growth Hormone in serum.
Tested Reactivity	Hu
Tested Application	ELISA
Target Name	Human Growth Hormone
Conjugation	HRP
Conjugation Note	Substrate: TMB and read at 450 nm.
Sensitivity	0.1 ng/ml
Sample Type	Serum.
Standard Range	0.2 - 12 ng/ml
Sample Volume	50 µl
Alternate Names	GH-N; Somatotropin; IGHD1B; Growth hormone; Growth hormone 1; Pituitary growth hormone; GHN; hGH-N; GH

### Application Instructions

Assay Time	~ 2 hours
------------	-----------

### Properties

Form	96 well
Storage instruction	Store the kit at 2-8°C. Keep microplate wells sealed in a dry bag with desiccants. Do not expose test reagents to heat, sun or strong light during storage and usage. Please refer to the product user manual for detail temperatures of the components.
Note	For laboratory research only, not for drug, diagnostic or other use.

### Bioinformation

Gene Symbol	GH1
Gene Full Name	growth hormone 1
Background	The protein encoded by this gene is a member of the somatotropin/prolactin family of hormones which play an important role in growth control. The gene, along with four other related genes, is located at the growth hormone locus on chromosome 17 where they are interspersed in the same transcriptional orientation; an arrangement which is thought to have evolved by a series of gene duplications. The five genes share a remarkably high degree of sequence identity. Alternative splicing generates additional isoforms of each of the five growth hormones, leading to further diversity and potential for specialization. This particular family member is expressed in the pituitary but not in placental tissue as is the case for the other four genes in the growth hormone locus. Mutations in or deletions of the gene

lead to growth hormone deficiency and short stature. [provided by RefSeq, Jul 2008]

**Function**

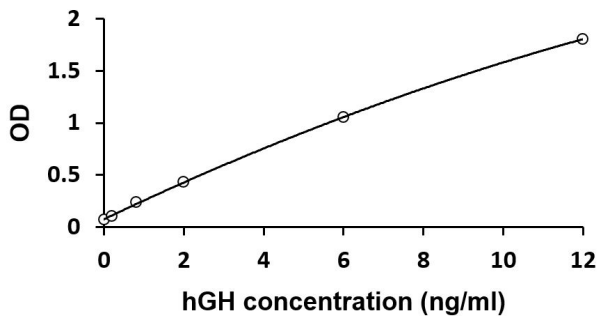
Plays an important role in growth control. Its major role in stimulating body growth is to stimulate the liver and other tissues to secrete IGF-1. It stimulates both the differentiation and proliferation of myoblasts. It also stimulates amino acid uptake and protein synthesis in muscle and other tissues. [UniProt]

**Cellular Localization**

Secreted. [UniProt]

**Images**

---



ARG82821 Human Growth Hormone (High sensitive) ELISA Kit standard curve image

ARG82821 Human Growth Hormone (High sensitive) ELISA Kit results of a typical standard run with optical density reading at 450 nm.

---