

ARG82754 Human PRELP ELISA Kit

Package: 96 wells
Store at: 4°C

Component

| Cat. No. | Component Name | Package | Temp |
|--------------|---------------------------------------|----------------------|---------------------------------------------------------------------|
| ARG82754-001 | Antibody-coated microplate | 8 X 12 strips | 4°C. Unused strips should be sealed tightly in the air-tight pouch. |
| ARG82754-002 | Standard | 2 X 10 ng/vial | 4°C |
| ARG82754-003 | Standard/Sample diluent | 30 ml (Ready to use) | 4°C |
| ARG82754-004 | Antibody conjugate concentrate (100X) | 1 vial (100 µl) | 4°C |
| ARG82754-005 | Antibody diluent buffer | 12 ml (Ready to use) | 4°C |
| ARG82754-006 | HRP-Streptavidin concentrate (100X) | 1 vial (100 µl) | 4°C |
| ARG82754-007 | HRP-Streptavidin diluent buffer | 12 ml (Ready to use) | 4°C |
| ARG82754-008 | 25X Wash buffer | 20 ml | 4°C |
| ARG82754-009 | TMB substrate | 10 ml (Ready to use) | 4°C (Protect from light) |
| ARG82754-010 | STOP solution | 10 ml (Ready to use) | 4°C |
| ARG82754-011 | Plate sealer | 4 strips | Room temperature |

Summary

| | |
|---------------------|----------------------------------------------------------------------------------------------------------------------------------------------------------------------------|
| Product Description | ARG82754 Human PRELP ELISA Kit is an Enzyme Immunoassay kit for the quantification of Human PRELP in serum, plasma (EDTA, heparin, citrate) and cell culture supernatants. |
| Tested Reactivity | Hu |
| Tested Application | ELISA |
| Target Name | PRELP |
| Conjugation | HRP |
| Conjugation Note | Substrate: TMB and read at 450 nm. |
| Sensitivity | 50 pg/ml |
| Sample Type | Serum, plasma (EDTA, heparin, citrate) and cell culture supernatants. |
| Standard Range | 93.8 - 6000 pg/ml |
| Sample Volume | 100 µl |
| Precision | Intra-Assay CV: 5.8% Inter-Assay CV: 6.3% |

Alternate Names

MST161; SLRR2A; Prolargin; Proline-arginine-rich end leucine-rich repeat protein; MSTP161

Application Instructions

Assay Time ~ 5 hours

Properties

Form 96 well

Storage instruction Store the kit at 2-8°C. Keep microplate wells sealed in a dry bag with desiccants. Do not expose test reagents to heat, sun or strong light during storage and usage. Please refer to the product user manual for detail temperatures of the components.

Note For laboratory research only, not for drug, diagnostic or other use.

Bioinformation

Gene Symbol PRELP

Gene Full Name proline/arginine-rich end leucine-rich repeat protein

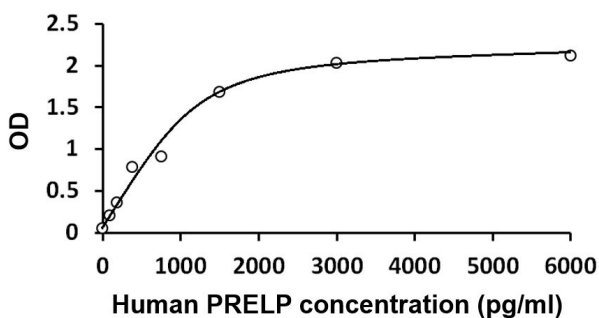
Background The protein encoded by this gene is a leucine-rich repeat protein present in connective tissue extracellular matrix. This protein functions as a molecule anchoring basement membranes to the underlying connective tissue. This protein has been shown to bind type I collagen to basement membranes and type II collagen to cartilage. It also binds the basement membrane heparan sulfate proteoglycan perlecan. This protein is suggested to be involved in the pathogenesis of Hutchinson-Gilford progeria (HGP), which is reported to lack the binding of collagen in basement membranes and cartilage. Alternatively spliced transcript variants encoding the same protein have been observed. [provided by RefSeq, Jul 2008]

Function May anchor basement membranes to the underlying connective tissue. [UniProt]

Highlight Related products:
[PRELP antibodies](#); [PRELP ELISA Kits](#);
New ELISA data calculation tool:
[Simplify the ELISA analysis by GainData](#)

Cellular Localization Secreted, extracellular space, extracellular matrix. [UniProt]

Images



ARG82754 Human PRELP ELISA Kit standard curve image

ARG82754 Human PRELP ELISA Kit results of a typical standard run with optical density reading at 450 nm.