

## ARG82694 Mouse MCP5 / Mast cell chymase ELISA Kit

Package: 96 wells  
Store at: 4°C

### Component

Cat. No.	Component Name	Package	Temp
ARG82694-001	Antibody-coated microplate	8 X 12 strips	4°C. Unused strips should be sealed tightly in the air-tight pouch.
ARG82694-002	Standard	2 X 10 ng/vial	4°C
ARG82694-003	Standard/Sample diluent	30 ml (Ready to use)	4°C
ARG82694-004	Antibody conjugate concentrate (100X)	1 vial (100 µl)	4°C
ARG82694-005	Antibody diluent buffer	12 ml (Ready to use)	4°C
ARG82694-006	HRP-Streptavidin concentrate (100X)	1 vial (100 µl)	4°C
ARG82694-007	HRP-Streptavidin diluent buffer	12 ml (Ready to use)	4°C
ARG82694-008	25X Wash buffer	20 ml	4°C
ARG82694-009	TMB substrate	10 ml (Ready to use)	4°C (Protect from light)
ARG82694-010	STOP solution	10 ml (Ready to use)	4°C
ARG82694-011	Plate sealer	4 strips	Room temperature

### Summary

Product Description	ARG82694 Mouse MCP5 / Mast cell chymase ELISA Kit is an Enzyme Immunoassay kit for the quantification of Mouse MCP5 / Mast cell chymase in serum, plasma (EDTA, heparin) and cell culture supernatants.
Tested Reactivity	Ms
Tested Application	ELISA
Target Name	MCP5 / Mast cell chymase
Conjugation	HRP
Conjugation Note	Substrate: TMB and read at 450 nm.
Sensitivity	7.8 pg/ml
Sample Type	Serum, plasma (EDTA, heparin) and cell culture supernatants.
Standard Range	15.6 - 1000 pg/ml
Sample Volume	100 µl
Precision	Intra-Assay CV: 6.6%

Inter-Assay CV: 7.9%

Alternate Names Scya; MCP-5; Scya12

## Application Instructions

---

Assay Time ~ 5 hours

## Properties

---

Form 96 well

Storage instruction Store the kit at 2-8°C. Keep microplate wells sealed in a dry bag with desiccants. Do not expose test reagents to heat, sun or strong light during storage and usage. Please refer to the product user manual for detail temperatures of the components.

Note For laboratory research only, not for drug, diagnostic or other use.

## Bioinformation

---

Gene Symbol Ccl12

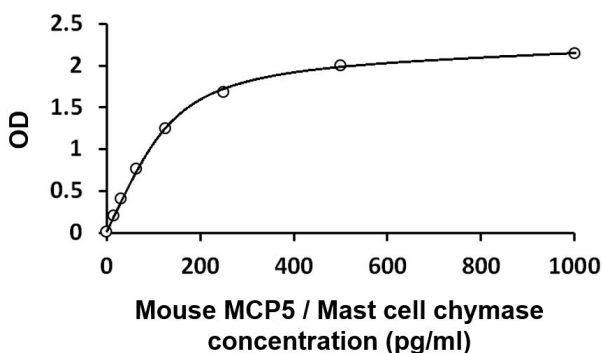
Gene Full Name chemokine (C-C motif) ligand 12

Function Chemotactic factor that attracts eosinophils, monocytes, and lymphocytes but not neutrophils. Potent monocyte active chemokine that signals through CCR2. Involved in allergic inflammation and the host response to pathogens and may play a pivotal role during early stages of allergic lung inflammation. [UniProt]

Highlight Related products:  
[MCP5 antibodies](#); [MCP5 ELISA Kits](#);  
New ELISA data calculation tool:  
[Simplify the ELISA analysis by GainData](#)

## Images

---



ARG82694 Mouse MCP5 / Mast cell chymase ELISA Kit standard curve image

ARG82694 Mouse MCP5 / Mast cell chymase ELISA Kit results of a typical standard run with optical density reading at 450 nm.