

ARG82671 Monkey Insulin ELISA Kit

Package: 96 wells
Store at: 4°C

Summary

| | |
|---------------------|---|
| Product Description | ARG82671 Monkey Insulin ELISA Kit is an Enzyme Immunoassay kit for the quantification of Monkey Insulin in serum, plasma and cell culture supernatants. |
| Tested Reactivity | Mk |
| Tested Application | ELISA |
| Target Name | Insulin |
| Conjugation | HRP |
| Conjugation Note | Substrate: TMB and read at 450 nm. |
| Sensitivity | 0.4 µIU/ml |
| Sample Type | Serum, plasma and cell culture supernatants. |
| Standard Range | 0.78 - 50 µIU/ml |
| Sample Volume | 100 µl |
| Precision | CV: < 10% |
| Alternate Names | IDDM; IDDM2; IDDM1; ILPR; MODY10; Insulin; IRDN |

Application Instructions

| | |
|------------|-------------|
| Assay Time | ~ 3.5 hours |
|------------|-------------|

Properties

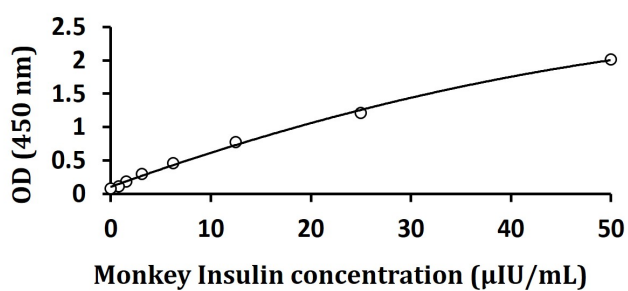
| | |
|---------------------|--|
| Form | 96 well |
| Storage instruction | Store the kit at 2-8°C. Keep microplate wells sealed in a dry bag with desiccants. Do not expose test reagents to heat, sun or strong light during storage and usage. Please refer to the product user manual for detail temperatures of the components. |
| Note | For laboratory research only, not for drug, diagnostic or other use. |

Bioinformation

| | |
|----------------|---|
| Gene Symbol | INS |
| Gene Full Name | insulin |
| Background | This gene encodes insulin, a peptide hormone that plays a vital role in the regulation of carbohydrate and lipid metabolism. After removal of the precursor signal peptide, proinsulin is post-translationally cleaved into three peptides: the B chain and A chain peptides, which are covalently linked via two disulfide bonds to form insulin, and C-peptide. Binding of insulin to the insulin receptor (INSR) stimulates glucose uptake. A multitude of mutant alleles with phenotypic effects have been identified. There is a read-through gene, INS-IGF2, which overlaps with this gene at the 5' region and with the IGF2 gene at the 3' region. Alternative splicing results in multiple transcript variants. [provided by RefSeq, Jan 2019] |

| | |
|-----------------------|--|
| Function | Insulin decreases blood glucose concentration. It increases cell permeability to monosaccharides, amino acids and fatty acids. It accelerates glycolysis, the pentose phosphate cycle, and glycogen synthesis in liver. [UniProt] |
| Highlight | Related products: Insulin antibodies ; Insulin ELISA Kits ; Insulin Duos / Panels ; Insulin recombinant proteins ; New ELISA data calculation tool: Simplify the ELISA analysis by GainData |
| Cellular Localization | Secreted. [UniProt] |

Images



ARG82671 Monkey Insulin ELISA Kit standard curve image

ARG82671 Monkey Insulin ELISA Kit results of a typical standard run with optical density reading at 450 nm.