

## ARG82588 Human Prolactin Receptor ELISA Kit

Package: 96 wells

Store at: 4°C

### Summary

Product Description	ARG82588 Human Prolactin Receptor ELISA Kit is an Enzyme Immunoassay kit for the quantification of Human Prolactin Receptor in serum, plasma and cell culture supernatants.
Tested Reactivity	Hu
Tested Application	ELISA
Specificity	This kit could assay both natural and recombinant Human Prolactin Receptor.  No significant cross-reactivity or interference was observed in the following samples: Human: IFN gamma, IL1 beta, IL2, IL4, IL5, IL6, IL8, IL10, IL12, IL17A, IL18, IL21, IL22, IL23, MCP1, TGF beta 1, TNF alpha and VEGF. Mouse: GM-CSF, IFN gamma, IL1 beta, IL2, IL4, IL6, IL10, IL17A and TNF alpha. Rat: IFN gamma, IL1 beta, IL4, IL6, IL10 and TNF alpha.
Target Name	Prolactin Receptor
Conjugation	HRP
Conjugation Note	Substrate: TMB and read at 450 nm.
Sensitivity	7.8 pg/ml
Sample Type	Serum, plasma and cell culture supernatants.
Standard Range	15.6 - 1000 pg/ml
Sample Volume	50 - 100 µl
Precision	Intra-Assay CV: 2.4% Inter-Assay CV: 2.5%
Alternate Names	MFAB; hPRLr; PRL-R; Prolactin receptor; HPRL

### Application Instructions

Assay Time	~ 3.5 hours
------------	-------------

### Properties

Form	96 well
Storage instruction	Store the kit at 2-8°C. Keep microplate wells sealed in a dry bag with desiccants. Do not expose test reagents to heat, sun or strong light during storage and usage. Please refer to the product user manual for detail temperatures of the components.
Note	For laboratory research only, not for drug, diagnostic or other use.

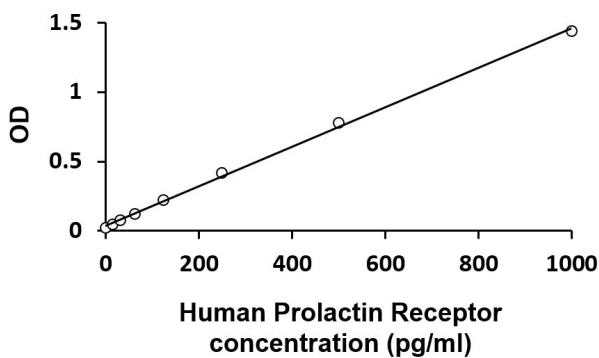
### Bioinformation

Gene Symbol	PRLR
-------------	------

Gene Full Name	prolactin receptor
Background	This gene encodes a receptor for the anterior pituitary hormone, prolactin, and belongs to the type I cytokine receptor family. Prolactin-dependent signaling occurs as the result of ligand-induced dimerization of the prolactin receptor. Several alternatively spliced transcript variants encoding different membrane-bound and soluble isoforms have been described for this gene, which may function to modulate the endocrine and autocrine effects of prolactin in normal tissue and cancer. [provided by RefSeq, Feb 2011]
Function	This is a receptor for the anterior pituitary hormone prolactin (PRL). Acts as a prosurvival factor for spermatozoa by inhibiting sperm capacitation through suppression of SRC kinase activation and stimulation of AKT. Isoform 4 is unable to transduce prolactin signaling. Isoform 6 is unable to transduce prolactin signaling. [UniProt]
Highlight	Related products: <a href="#">Prolactin Receptor antibodies</a> ; <a href="#">Prolactin Receptor ELISA Kits</a> ; New ELISA data calculation tool: <a href="#">Simplify the ELISA analysis by GainData</a>
Cellular Localization	Membrane; Single-pass type I membrane protein. Isoform 7: Secreted. [UniProt]

## Images

---



ARG82588 Human Prolactin Receptor ELISA Kit standard curve image

ARG82588 Human Prolactin Receptor ELISA Kit results of a typical standard run with optical density reading at 450 nm.