

ARG82529 Mouse PODXL ELISA Kit

Package: 96 wells
Store at: 4°C

Component

Cat. No.	Component Name	Package	Temp
ARG82529-001	Antibody-coated microplate	8 X 12 strips	4°C. Unused strips should be sealed tightly in the air-tight pouch.
ARG82529-002	Standard	2 X 10 ng/vial	4°C
ARG82529-003	Standard/Sample diluent	30 ml (Ready to use)	4°C
ARG82529-004	Antibody conjugate concentrate (100X)	1 vial (100 µl)	4°C
ARG82529-005	Antibody diluent buffer	12 ml (Ready to use)	4°C
ARG82529-006	HRP-Streptavidin concentrate (100X)	1 vial (100 µl)	4°C
ARG82529-007	HRP-Streptavidin diluent buffer	12 ml (Ready to use)	4°C
ARG82529-008	25X Wash buffer	20 ml	4°C
ARG82529-009	TMB substrate	10 ml (Ready to use)	4°C (Protect from light)
ARG82529-010	STOP solution	10 ml (Ready to use)	4°C
ARG82529-011	Plate sealer	4 strips	Room temperature

Summary

Product Description	ARG82529 Mouse PODXL ELISA Kit is an Enzyme Immunoassay kit for the quantification of Mouse PODXL in serum, plasma (EDTA, heparin) and cell culture supernatants.
Tested Reactivity	Ms
Tested Application	ELISA
Target Name	PODXL
Conjugation	HRP
Conjugation Note	Substrate: TMB and read at 450 nm.
Sensitivity	78 pg/ml
Sample Type	Serum, plasma (EDTA, heparin) and cell culture supernatants.
Standard Range	156 - 10000 pg/ml
Sample Volume	100 µl
Precision	Intra-Assay CV: 6.1% Inter-Assay CV: 6.9%

Alternate Names Gp200; GCTM-2 antigen; PCLP; Podocalyxin; PC; PCLP-1; Podocalyxin-like protein 1

Application Instructions

Assay Time ~ 5 hours

Properties

Form 96 well

Storage instruction Store the kit at 2-8°C. Keep microplate wells sealed in a dry bag with desiccants. Do not expose test reagents to heat, sun or strong light during storage and usage. Please refer to the product user manual for detail temperatures of the components.

Note For laboratory research only, not for drug, diagnostic or other use.

Bioinformation

Gene Symbol PODXL

Gene Full Name podocalyxin-like

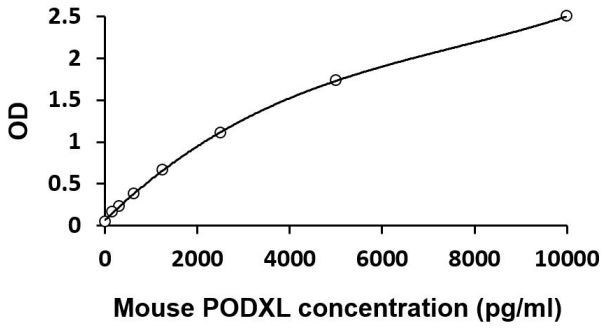
Background This gene encodes a member of the sialomucin protein family. The encoded protein was originally identified as an important component of glomerular podocytes. Podocytes are highly differentiated epithelial cells with interdigitating foot processes covering the outer aspect of the glomerular basement membrane. Other biological activities of the encoded protein include: binding in a membrane protein complex with Na⁺/H⁺ exchanger regulatory factor to intracellular cytoskeletal elements, playing a role in hematopoietic cell differentiation, and being expressed in vascular endothelium cells and binding to L-selectin. [provided by RefSeq, Jul 2008]

Function Involved in the regulation of both adhesion and cell morphology and cancer progression. Function as an anti-adhesive molecule that maintains an open filtration pathway between neighboring foot processes in the podocyte by charge repulsion. Acts as a pro-adhesive molecule, enhancing the adherence of cells to immobilized ligands, increasing the rate of migration and cell-cell contacts in an integrin-dependent manner. Induces the formation of apical actin-dependent microvilli. Involved in the formation of a preapical plasma membrane subdomain to set up initial epithelial polarization and the apical lumen formation during renal tubulogenesis. Plays a role in cancer development and aggressiveness by inducing cell migration and invasion through its interaction with the actin-binding protein EZR. Affects EZR-dependent signaling events, leading to increased activities of the MAPK and PI3K pathways in cancer cells. [UniProt]

Highlight Related products:
[PODXL antibodies](#); [PODXL ELISA Kits](#);
New ELISA data calculation tool:
[Simplify the ELISA analysis by GainData](#)

PTM N- and O-linked glycosylated. Sialoglycoprotein (By similarity). [UniProt]

Cellular Localization Apical cell membrane. Cell projection, lamellipodium. Cell projection, filopodium. Cell projection, ruffle. Cell projection, microvillus. Membrane raft. Membrane; Single-pass type I membrane protein. [UniProt]



ARG82529 Mouse PODXL ELISA Kit standard curve image

ARG82529 Mouse PODXL ELISA Kit results of a typical standard run with optical density reading at 450 nm.