

ARG82465 Mouse Cadherin 17 ELISA Kit

Package: 96 wells
Store at: 4°C

Component

Cat. No.	Component Name	Package	Temp
ARG82465-001	Antibody-coated microplate	8 X 12 strips	4°C. Unused strips should be sealed tightly in the air-tight pouch.
ARG82465-002	Standard	2 X 10 ng/vial	4°C
ARG82465-003	Standard/Sample diluent	30 ml (Ready to use)	4°C
ARG82465-004	Antibody conjugate concentrate (100X)	1 vial (100 µl)	4°C
ARG82465-005	Antibody diluent buffer	12 ml (Ready to use)	4°C
ARG82465-006	HRP-Streptavidin concentrate (100X)	1 vial (100 µl)	4°C
ARG82465-007	HRP-Streptavidin diluent buffer	12 ml (Ready to use)	4°C
ARG82465-008	25X Wash buffer	20 ml	4°C
ARG82465-009	TMB substrate	10 ml (Ready to use)	4°C (Protect from light)
ARG82465-010	STOP solution	10 ml (Ready to use)	4°C
ARG82465-011	Plate sealer	4 strips	Room temperature

Summary

Product Description	ARG82465 Mouse Cadherin 17 ELISA Kit is an Enzyme Immunoassay kit for the quantification of Mouse Cadherin 17 in serum, plasma (heparin) and cell culture supernatants.
Tested Reactivity	Ms
Tested Application	ELISA
Target Name	Cadherin 17
Conjugation	HRP
Conjugation Note	Substrate: TMB and read at 450 nm.
Sensitivity	23.45 pg/ml
Sample Type	Serum, plasma (heparin) and cell culture supernatants.
Standard Range	46.9 - 3000 pg/ml
Sample Volume	100 µl
Precision	Intra-Assay CV: 5.6% Inter-Assay CV: 6.7%

Alternate Names CDH16; Cadherin-17; HPT-1; HPT1; Intestinal peptide-associated transporter HPT-1; LI-cadherin; Liver-intestine cadherin

Application Instructions

Assay Time ~ 5 hours

Properties

Form 96 well

Storage instruction Store the kit at 2-8°C. Keep microplate wells sealed in a dry bag with desiccants. Do not expose test reagents to heat, sun or strong light during storage and usage. Please refer to the product user manual for detail temperatures of the components.

Note For laboratory research only, not for drug, diagnostic or other use.

Bioinformation

Gene Symbol CDH17

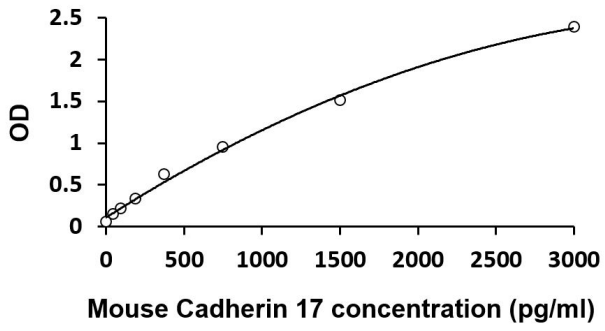
Gene Full Name cadherin 17, LI cadherin (liver-intestine)

Background This gene is a member of the cadherin superfamily, genes encoding calcium-dependent, membrane-associated glycoproteins. The encoded protein is cadherin-like, consisting of an extracellular region, containing 7 cadherin domains, and a transmembrane region but lacking the conserved cytoplasmic domain. The protein is a component of the gastrointestinal tract and pancreatic ducts, acting as an intestinal proton-dependent peptide transporter in the first step in oral absorption of many medically important peptide-based drugs. The protein may also play a role in the morphological organization of liver and intestine. Alternative splicing results in multiple transcript variants. [provided by RefSeq, Jan 2009]

Function Cadherins are calcium-dependent cell adhesion proteins. They preferentially interact with themselves in a homophilic manner in connecting cells; cadherins may thus contribute to the sorting of heterogeneous cell types. LI-cadherin may have a role in the morphological organization of liver and intestine. Involved in intestinal peptide transport. [UniProt]

Highlight Related products:
[Cadherin antibodies](#); [Cadherin ELISA Kits](#); [Cadherin Duos / Panels](#);
New ELISA data calculation tool:
[Simplify the ELISA analysis by GainData](#)

Cellular Localization Cell membrane; Single-pass type I membrane protein. [UniProt]



ARG82465 Mouse Cadherin 17 ELISA Kit standard curve image

ARG82465 Mouse Cadherin 17 ELISA Kit results of a typical standard run with optical density reading at 450 nm.