

ARG82392 Rat Plexin A1 ELISA Kit

Package: 96 wells
Store at: 4°C

Component

Cat. No.	Component Name	Package	Temp
ARG82392-001	Antibody-coated microplate	8 X 12 strips	4°C. Unused strips should be sealed tightly in the air-tight pouch.
ARG82392-002	Standard	2 X 20 ng/vial	4°C
ARG82392-003	Standard/Sample diluent	30 ml (Ready to use)	4°C
ARG82392-004	Antibody conjugate concentrate (100X)	1 vial (100 µl)	4°C
ARG82392-005	Antibody diluent buffer	12 ml (Ready to use)	4°C
ARG82392-006	HRP-Streptavidin concentrate (100X)	1 vial (100 µl)	4°C
ARG82392-007	HRP-Streptavidin diluent buffer	12 ml (Ready to use)	4°C
ARG82392-008	25X Wash buffer	20 ml	4°C
ARG82392-009	TMB substrate	10 ml (Ready to use)	4°C (Protect from light)
ARG82392-010	STOP solution	10 ml (Ready to use)	4°C
ARG82392-011	Plate sealer	4 strips	Room temperature

Summary

Product Description	ARG82392 Rat Plexin A1 ELISA Kit is an Enzyme Immunoassay kit for the quantification of Rat Plexin A1 in serum, plasma (EDTA, heparin) and cell culture supernatants.
Tested Reactivity	Rat
Tested Application	ELISA
Target Name	Plexin A1
Conjugation	HRP
Conjugation Note	Substrate: TMB and read at 450 nm.
Sensitivity	0.156 ng/ml
Sample Type	Serum, plasma (EDTA, heparin) and cell culture supernatants.
Standard Range	0.312 - 20 ng/ml
Sample Volume	100 µl
Precision	Intra-Assay CV: 6.4% Inter-Assay CV: 5.7%

Alternate Names Semaphorin receptor NOV; PLEXIN-A1; PLXN1; NOV; Plexin-A1; NOV P

Application Instructions

Assay Time ~ 5 hours

Properties

Form 96 well

Storage instruction Store the kit at 2-8°C. Keep microplate wells sealed in a dry bag with desiccants. Do not expose test reagents to heat, sun or strong light during storage and usage. Please refer to the product user manual for detail temperatures of the components.

Note For laboratory research only, not for drug, diagnostic or other use.

Bioinformation

Gene Symbol PLXNA1

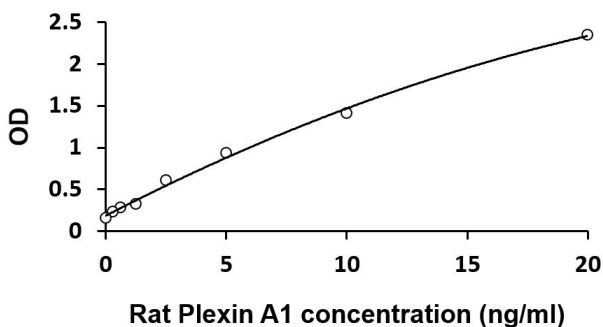
Gene Full Name plexin A1

Function Coreceptor for SEMA3A, SEMA3C, SEMA3F and SEMA6D. Necessary for signaling by class 3 semaphorins and subsequent remodeling of the cytoskeleton. Plays a role in axon guidance, invasive growth and cell migration. Class 3 semaphorins bind to a complex composed of a neuropilin and a plexin. The plexin modulates the affinity of the complex for specific semaphorins, and its cytoplasmic domain is required for the activation of down-stream signaling events in the cytoplasm (By similarity). [UniProt]

Highlight Related products:
[Plexin antibodies](#); [Plexin ELISA Kits](#);
New ELISA data calculation tool:
[Simplify the ELISA analysis by GainData](#)

Cellular Localization Cell membrane; Single-pass type I membrane protein. [UniProt]

Images



ARG82392 Rat Plexin A1 ELISA Kit standard curve image

ARG82392 Rat Plexin A1 ELISA Kit results of a typical standard run with optical density reading at 450 nm.