

## ARG82331 Human DKK1 ELISA Kit

Package: 96 wells  
Store at: 4°C

### Component

Cat. No.	Component Name	Package	Temp
ARG82331-001	Antibody-coated microplate	8 X 12 strips	4°C. Unused strips should be sealed tightly in the air-tight pouch.
ARG82331-002	Standard	2 X 10 ng/vial	4°C
ARG82331-003	Standard/Sample diluent	30 ml (Ready to use)	4°C
ARG82331-004	Antibody conjugate concentrate (100X)	1 vial (100 µl)	4°C
ARG82331-005	Antibody diluent buffer	12 ml (Ready to use)	4°C
ARG82331-006	HRP-Streptavidin concentrate (100X)	1 vial (100 µl)	4°C
ARG82331-007	HRP-Streptavidin diluent buffer	12 ml (Ready to use)	4°C
ARG82331-008	25X Wash buffer	20 ml	4°C
ARG82331-009	TMB substrate	10 ml (Ready to use)	4°C (Protect from light)
ARG82331-010	STOP solution	10 ml (Ready to use)	4°C
ARG82331-011	Plate sealer	4 strips	Room temperature

### Summary

Product Description	ARG82331 Human DKK1 ELISA Kit is an Enzyme Immunoassay kit for the quantification of Human DKK1 in serum, plasma (EDTA, heparin) and cell culture supernatants.
Tested Reactivity	Hu
Tested Application	ELISA
Target Name	DKK1
Conjugation	HRP
Conjugation Note	Substrate: TMB and read at 450 nm.
Sensitivity	31.25 pg/ml
Sample Type	Serum, plasma (EDTA, heparin) and cell culture supernatants.
Standard Range	62.5 - 4000 pg/ml
Sample Volume	100 µl
Precision	Intra-Assay CV: 6.1% Inter-Assay CV: 7.0%

Alternate Names Dkk-1; Dickkopf-1; SK; DKK-1; hDkk-1; Dickkopf-related protein 1

## Application Instructions

Assay Time ~ 5 hours

## Properties

Form 96 well

Storage instruction Store the kit at 2-8°C. Keep microplate wells sealed in a dry bag with desiccants. Do not expose test reagents to heat, sun or strong light during storage and usage. Please refer to the product user manual for detail temperatures of the components.

Note For laboratory research only, not for drug, diagnostic or other use.

## Bioinformation

Gene Symbol DKK1

Gene Full Name dickkopf WNT signaling pathway inhibitor 1

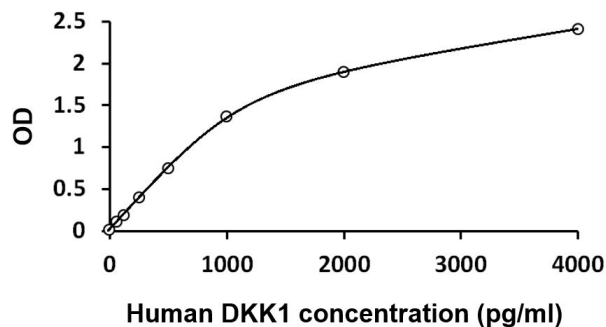
Background This gene encodes a protein that is a member of the dickkopf family. It is a secreted protein with two cysteine rich regions and is involved in embryonic development through its inhibition of the WNT signaling pathway. Elevated levels of DKK1 in bone marrow plasma and peripheral blood is associated with the presence of osteolytic bone lesions in patients with multiple myeloma. [provided by RefSeq, Jul 2008]

Function Antagonizes canonical Wnt signaling by inhibiting LRP5/6 interaction with Wnt and by forming a ternary complex with the transmembrane protein KREMEN that promotes internalization of LRP5/6. DKKs play an important role in vertebrate development, where they locally inhibit Wnt regulated processes such as antero-posterior axial patterning, limb development, somitogenesis and eye formation. In the adult, Dkks are implicated in bone formation and bone disease, cancer and Alzheimer disease. [UniProt]

Highlight Related products:  
[DKK1 antibodies: DKK1 ELISA Kits:](#)  
New ELISA data calculation tool:  
[Simplify the ELISA analysis by GainData](#)

Cellular Localization Secreted. [UniProt]

## Images



ARG82331 Human DKK1 ELISA Kit standard curve image

ARG82331 Human DKK1 ELISA Kit results of a typical standard run with optical density reading at 450 nm.