

ARG82328 Mouse CD152 / CTLA4 ELISA Kit

Package: 96 wells
Store at: 4°C

Component

Cat. No.	Component Name	Package	Temp
ARG82328-001	Antibody-coated microplate	8 X 12 strips	4°C. Unused strips should be sealed tightly in the air-tight pouch.
ARG82328-002	Standard	2 X 10 ng/vial	4°C
ARG82328-003	Standard/Sample diluent	30 ml (Ready to use)	4°C
ARG82328-004	Antibody conjugate concentrate (100X)	1 vial (100 µl)	4°C
ARG82328-005	Antibody diluent buffer	12 ml (Ready to use)	4°C
ARG82328-006	HRP-Streptavidin concentrate (100X)	1 vial (100 µl)	4°C
ARG82328-007	HRP-Streptavidin diluent buffer	12 ml (Ready to use)	4°C
ARG82328-008	25X Wash buffer	20 ml	4°C
ARG82328-009	TMB substrate	10 ml (Ready to use)	4°C (Protect from light)
ARG82328-010	STOP solution	10 ml (Ready to use)	4°C
ARG82328-011	Plate sealer	4 strips	Room temperature

Summary

Product Description	ARG82328 Mouse CD152 / CTLA4 ELISA Kit is an Enzyme Immunoassay kit for the quantification of Mouse CD152 / CTLA4 in serum, plasma (heparin) and cell culture supernatants.
Tested Reactivity	Ms
Tested Application	ELISA
Target Name	CD152 / CTLA4
Conjugation	HRP
Conjugation Note	Substrate: TMB and read at 450 nm.
Sensitivity	78 pg/ml
Sample Type	Serum, plasma (heparin) and cell culture supernatants.
Standard Range	156 - 10000 pg/ml
Sample Volume	100 µl
Precision	Intra-Assay CV: 5.0% Inter-Assay CV: 5.8%

Alternate Names GRD4; CTLA-4; CELIAC3; CD; Cytotoxic T-lymphocyte-associated antigen 4; CD152; GSE; CD antigen CD152; Cytotoxic T-lymphocyte protein 4; ALPS5; IDDM12

Application Instructions

Assay Time ~ 5 hours

Properties

Form 96 well

Storage instruction Store the kit at 2-8°C. Keep microplate wells sealed in a dry bag with desiccants. Do not expose test reagents to heat, sun or strong light during storage and usage. Please refer to the product user manual for detail temperatures of the components.

Note For laboratory research only, not for drug, diagnostic or other use.

Bioinformation

Gene Symbol CTLA4

Gene Full Name cytotoxic T-lymphocyte-associated protein 4

Background This gene is a member of the immunoglobulin superfamily and encodes a protein which transmits an inhibitory signal to T cells. The protein contains a V domain, a transmembrane domain, and a cytoplasmic tail. Alternate transcriptional splice variants, encoding different isoforms, have been characterized. The membrane-bound isoform functions as a homodimer interconnected by a disulfide bond, while the soluble isoform functions as a monomer. Mutations in this gene have been associated with insulin-dependent diabetes mellitus, Graves disease, Hashimoto thyroiditis, celiac disease, systemic lupus erythematosus, thyroid-associated orbitopathy, and other autoimmune diseases. [provided by RefSeq, Jul 2008]

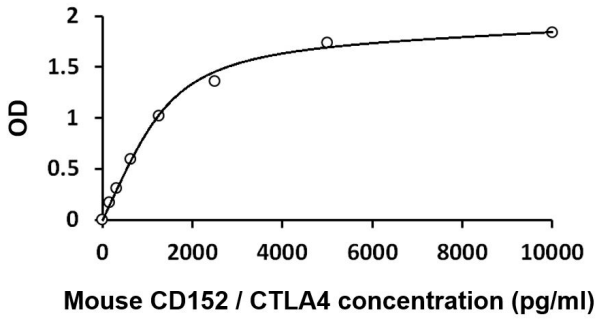
Function Inhibitory receptor acting as a major negative regulator of T-cell responses. The affinity of CTLA4 for its natural B7 family ligands, CD80 and CD86, is considerably stronger than the affinity of their cognate stimulatory coreceptor CD28. [UniProt]

Highlight Related products:
[CD152 antibodies](#); [CD152 ELISA Kits](#);
New ELISA data calculation tool:
[Simplify the ELISA analysis by GainData](#)

PTM N-glycosylation is important for dimerization.

Phosphorylation at Tyr-201 prevents binding to the AP-2 adapter complex, blocks endocytosis, and leads to retention of CTLA4 on the cell surface. [UniProt]

Cellular Localization Cell membrane; Single-pass type I membrane protein. Note=Exists primarily an intracellular antigen whose surface expression is tightly regulated by restricted trafficking to the cell surface and rapid internalisation;. [UniProt]



ARG82328 Mouse CD152 / CTLA4 ELISA Kit standard curve image

ARG82328 Mouse CD152 / CTLA4 ELISA Kit results of a typical standard run with optical density reading at 450 nm.
