

ARG82241 Mouse TLR3 ELISA Kit

Package: 96 wells
Store at: 4°C

Summary

Product Description	ARG82241 Mouse TLR3 ELISA Kit is an Enzyme Immunoassay kit for the quantification of Mouse TLR3 in serum, plasma and cell culture supernatants.
Tested Reactivity	Ms
Tested Application	ELISA
Specificity	The following recombinant Mouse proteins were tested and exhibited no cross-reactivity or interference: IL1 beta, IL2, IL4, IL5, IL6, IL8, IL10, IFN gamma, TLR1, TLR2, TLR4, TNF alpha.
Target Name	TLR3
Conjugation Note	Read at 450 nm.
Sensitivity	62.5 pg/ml
Sample Type	Serum, plasma and cell culture supernatants.
Standard Range	125 - 8000 pg/ml
Sample Volume	100 µl
Precision	Intra-Assay CV: 6% Inter-Assay CV: 11%
Alternate Names	Toll-like receptor 3; CD antigen CD283; CD283; IIAE2

Application Instructions

Assay Time	3 hours
------------	---------

Properties

Form	96 well
Storage instruction	Store the kit at 2-8°C. Keep microplate wells sealed in a dry bag with desiccants. Do not expose test reagents to heat, sun or strong light during storage and usage. Please refer to the product user manual for detail temperatures of the components.
Note	For laboratory research only, not for drug, diagnostic or other use.

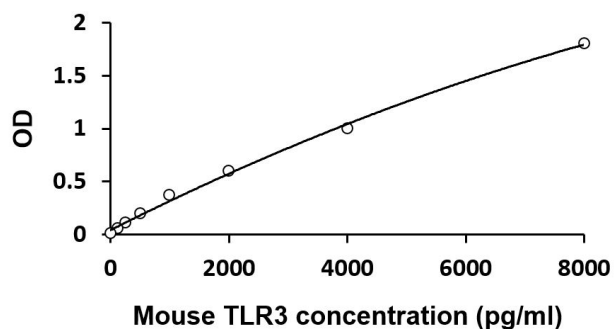
Bioinformation

Gene Symbol	TLR3
Gene Full Name	toll-like receptor 3
Background	The protein encoded by this gene is a member of the Toll-like receptor (TLR) family which plays a fundamental role in pathogen recognition and activation of innate immunity. TLRs are highly conserved from Drosophila to humans and share structural and functional similarities. They recognize pathogen-associated molecular patterns (PAMPs) that are expressed on infectious agents, and mediate the production of cytokines necessary for the development of effective immunity. The various TLRs exhibit different patterns of expression. This receptor is most abundantly expressed in placenta and pancreas,

and is restricted to the dendritic subpopulation of the leukocytes. It recognizes dsRNA associated with viral infection, and induces the activation of NF-kappaB and the production of type I interferons. It may thus play a role in host defense against viruses. Use of alternative polyadenylation sites to generate different length transcripts has been noted for this gene. [provided by RefSeq, Jul 2008]

Function	Key component of innate and adaptive immunity. TLRs (Toll-like receptors) control host immune response against pathogens through recognition of molecular patterns specific to microorganisms. TLR3 is a nucleotide-sensing TLR which is activated by double-stranded RNA, a sign of viral infection. Acts via the adapter TRIF/TICAM1, leading to NF-kappa-B activation, IRF3 nuclear translocation, cytokine secretion and the inflammatory response. [UniProt]
Highlight	Related products: TLR3 antibodies ; TLR3 ELISA Kits ; New ELISA data calculation tool: Simplify the ELISA analysis by GainData
PTM	Heavily N-glycosylated, except on that part of the surface of the ectodomain that is involved in ligand binding. TLR3 signaling requires a proteolytic cleavage mediated by cathepsins CTSB and CTSH, the cleavage occurs between amino acids 252 and 346. The cleaved form of TLR3 is the predominant form found in endosomes. [UniProt]
Cellular Localization	Endoplasmic reticulum membrane; Single-pass type I membrane protein. Endosome membrane. Early endosome. [UniProt]

Images



ARG82241 Mouse TLR3 ELISA Kit standard curve image

ARG82241 Mouse TLR3 ELISA Kit results of a typical standard run with optical density reading at 450 nm.