

ARG82095 Rat WFDC2 / HE4 ELISA Kit

Package: 96 wells
Store at: 4°C

Component

Cat. No.	Component Name	Package	Temp
ARG82095-001	Antibody-coated microplate	8 X 12 strips	4°C. Unused strips should be sealed tightly in the air-tight pouch.
ARG82095-002	Standard	2 X 10 ng/vial	4°C
ARG82095-003	Standard/Sample diluent	30 ml (Ready to use)	4°C
ARG82095-004	Antibody conjugate concentrate (100X)	1 vial (100 µl)	4°C
ARG82095-005	Antibody diluent buffer	12 ml (Ready to use)	4°C
ARG82095-006	HRP-Streptavidin concentrate (100X)	1 vial (100 µl)	4°C
ARG82095-007	HRP-Streptavidin diluent buffer	12 ml (Ready to use)	4°C
ARG82095-008	25X Wash buffer	20 ml	4°C
ARG82095-009	TMB substrate	10 ml (Ready to use)	4°C (Protect from light)
ARG82095-010	STOP solution	10 ml (Ready to use)	4°C
ARG82095-011	Plate sealer	4 strips	Room temperature

Summary

Product Description	ARG82095 Rat WFDC2 / HE4 ELISA Kit is an Enzyme Immunoassay kit for the quantification of Rat WFDC2 / HE4 in serum, plasma (heparin, EDTA) and cell culture supernatants.
Tested Reactivity	Rat
Tested Application	ELISA
Specificity	There is no detectable cross-reactivity with other relevant proteins.
Target Name	WFDC2 / HE4
Conjugation	HRP
Conjugation Note	Substrate: TMB and read at 450 nm.
Sensitivity	78 pg/ml
Sample Type	Serum, plasma (heparin, EDTA) and cell culture supernatants.
Standard Range	156 - 10000 pg/ml
Sample Volume	100 µl

Precision	Intra-Assay CV: 5.7%; Inter-Assay CV: 7.3%
Alternate Names	HE4; dJ461P17.6; WAP5; Putative protease inhibitor WAP5; Major epididymis-specific protein E4; WAP four-disulfide core domain protein 2; Epididymal secretory protein E4; EDDM4

Application Instructions

Assay Time ~ 5 hours

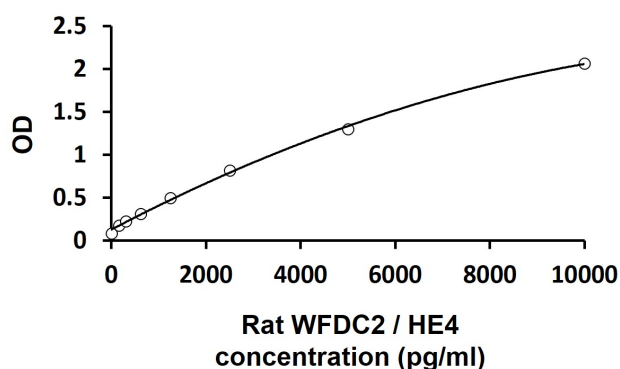
Properties

Form	96 well
Storage instruction	Store the kit at 2-8°C. Keep microplate wells sealed in a dry bag with desiccants. Do not expose test reagents to heat, sun or strong light during storage and usage. Please refer to the product user manual for detail temperatures of the components.
Note	For laboratory research only, not for drug, diagnostic or other use.

Bioinformation

Gene Symbol	WFDC2
Gene Full Name	WAP four-disulfide core domain 2
Background	This gene encodes a protein that is a member of the WFDC domain family. The WFDC domain, or WAP Signature motif, contains eight cysteines forming four disulfide bonds at the core of the protein, and functions as a protease inhibitor in many family members. This gene is expressed in pulmonary epithelial cells, and was also found to be expressed in some ovarian cancers. The encoded protein is a small secretory protein, which may be involved in sperm maturation. [provided by RefSeq, Jul 2008]
Function	Broad range protease inhibitor. [UniProt]
Highlight	Related products: WFDC2 antibodies ; WFDC2 ELISA Kits ; New ELISA data calculation tool: Simplify the ELISA analysis by GainData
Cellular Localization	Secreted. [UniProt]

Images



ARG82095 Rat WFDC2 / HE4 ELISA Kit standard curve image

ARG82095 Rat WFDC2 / HE4 ELISA Kit results of a typical standard run with optical density reading at 450 nm.