

ARG82000 Human ELABELA (ELA32, ELA21) ELISA Kit

Package: 96 wells

Store at: 4°C

Summary

| | |
|---------------------|---|
| Product Description | ARG82000 Human ELABELA (ELA32, ELA21) ELISA Kit is an Enzyme Immunoassay kit for the quantification of Human ELABELA (ELA32, ELA21) in serum and plasma. |
| Tested Reactivity | Hu |
| Tested Application | ELISA |
| Specificity | Cross Reactivity: ELA32 (Human) and ELA21 (Human, Mouse, Rat): 100% ANP (Mouse, Rat), Adrenomedullin (Human), BNP-32 (Human), CNP22 (Human, Rat, Mouse, Porcine), Apelin 36 (Human), Apelin 12 (Human, Mouse, Rat, Bovine) and Copeptin (Human): 0% |
| Target Name | ELABELA |
| Conjugation | HRP |
| Conjugation Note | Substrate: TMB and read at 450 nm. |
| Sensitivity | 0.25 ng/ml |
| Detection Range | Linear range: 0.25 - 2.7 ng/ml |
| Sample Type | Serum and Plasma |
| Standard Range | 0.01 - 100 ng/ml |
| Sample Volume | 50 µl |
| Precision | Intra-Assay CV: < 10%; Inter-Assay CV: < 15% |
| Alternate Names | Protein Toddler; tdl; ELA; Protein Elabela; Apelin receptor early endogenous ligand; Ende |

Application Instructions

| | |
|------------|-----------|
| Assay Time | ~ 4 hours |
|------------|-----------|

Properties

| | |
|---------------------|--|
| Form | 96 well |
| Storage instruction | Store the kit at 2-8°C. Keep microplate wells sealed in a dry bag with desiccants. Do not expose test reagents to heat, sun or strong light during storage and usage. Please refer to the product user manual for detail temperatures of the components. |
| Note | For laboratory research only, not for drug, diagnostic or other use. |

Bioinformation

| | |
|----------------|---|
| Gene Symbol | APELA |
| Gene Full Name | apelin receptor early endogenous ligand |
| Background | This gene encodes a peptide hormone that binds to the Apelin receptor. The encoded protein is |

required for heart development in zebrafish and has been shown to maintain self-renewal of human embryonic stem cells through activation of the PI3K/AKT pathway. Experiments in human and mouse cell lines point to additional roles for the encoded protein in angiogenesis and regulation of vascular tone. [provided by RefSeq, Jul 2016]

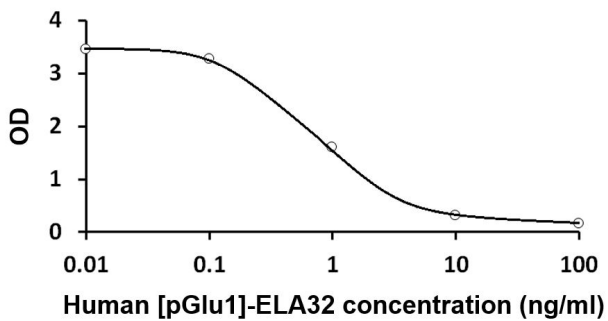
Function Hormone required during early development for endoderm differentiation and heart morphogenesis by acting as a ligand for the apelin receptor (APLNR). Acts as a motogen by promoting endoderm and mesendoderm cell migration during gastrulation by binding and activating the apelin receptor, thereby driving internalization of the apelin receptor. Plays a key role during heart development by acting as a ligand for the apelin receptor (By similarity). [UniProt]

Highlight Related products:

New ELISA data calculation tool:
[Simplify the ELISA analysis by GainData](#)

Cellular Localization Secreted. Secreted, extracellular space. Note=Found in blood plasma (PubMed:28137936). Found in serum of pregnant mice, peaking at midgestation; indicating a maternal and zygotic origin of circulating APELA during pregnancy (By similarity). [UniProt]

Images



ARG82000 Human ELABELA (ELA32, ELA21) ELISA Kit standard curve image

ARG82000 Human ELABELA (ELA32, ELA21) ELISA Kit results of a typical standard run with optical density reading at 450 nm.