

ARG81956 Human Syndecan 3 ELISA Kit

Package: 96 wells
Store at: 4°C

Component

Cat. No.	Component Name	Package	Temp
ARG81956-001	Antibody-coated microplate	8 X 12 strips	4°C. Unused strips should be sealed tightly in the air-tight pouch.
ARG81956-002	Standard	2 X 10 ng/vial	4°C
ARG81956-003	Standard/Sample diluent	30 ml (Ready to use)	4°C
ARG81956-004	Antibody conjugate concentrate (100X)	1 vial (100 µl)	4°C
ARG81956-005	Antibody diluent buffer	12 ml (Ready to use)	4°C
ARG81956-006	HRP-Streptavidin concentrate (100X)	1 vial (100 µl)	4°C
ARG81956-007	HRP-Streptavidin diluent buffer	12 ml (Ready to use)	4°C
ARG81956-008	25X Wash buffer	20 ml	4°C
ARG81956-009	TMB substrate	10 ml (Ready to use)	4°C (Protect from light)
ARG81956-010	STOP solution	10 ml (Ready to use)	4°C
ARG81956-011	Plate sealer	4 strips	Room temperature

Summary

Product Description	ARG81956 Human Syndecan 3 ELISA Kit is an Enzyme Immunoassay kit for the quantification of Human Syndecan 3 in serum, plasma (heparin, EDTA) and cell culture supernatants.
Tested Reactivity	Hu
Tested Application	ELISA
Specificity	There is no detectable cross-reactivity with other relevant proteins.
Target Name	Syndecan 3
Conjugation	HRP
Conjugation Note	Substrate: TMB and read at 450 nm.
Sensitivity	78 pg/ml
Sample Type	Serum, plasma (heparin, EDTA) and cell culture supernatants.
Standard Range	156 - 10000 pg/ml
Sample Volume	100 µl

Precision	Intra-Assay CV: 5.9%; Inter-Assay CV: 7.4%
Alternate Names	Syndecan-3; SYND3; SDCN

Application Instructions

Assay Time	~ 5 hours
------------	-----------

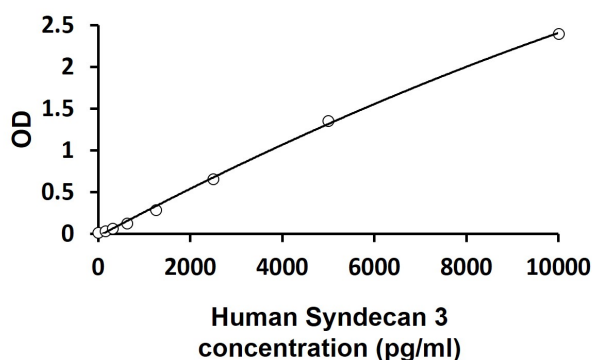
Properties

Form	96 well
Storage instruction	Store the kit at 2-8°C. Keep microplate wells sealed in a dry bag with desiccants. Do not expose test reagents to heat, sun or strong light during storage and usage. Please refer to the product user manual for detail temperatures of the components.
Note	For laboratory research only, not for drug, diagnostic or other use.

Bioinformation

Gene Symbol	SDC3
Gene Full Name	syndecan 3
Background	The protein encoded by this gene belongs to the syndecan proteoglycan family. It may play a role in the organization of cell shape by affecting the actin cytoskeleton, possibly by transferring signals from the cell surface in a sugar-dependent mechanism. Allelic variants of this gene have been associated with obesity. [provided by RefSeq, Oct 2009]
Function	Cell surface proteoglycan that may bear heparan sulfate (By similarity). May have a role in the organization of cell shape by affecting the actin cytoskeleton, possibly by transferring signals from the cell surface in a sugar-dependent mechanism. [UniProt]
Highlight	Related products: Syndecan antibodies ; Syndecan ELISA Kits ; New ELISA data calculation tool: Simplify the ELISA analysis by GainData
PTM	O-glycosylated within the Thr/Ser-rich region which could interact with lectin domains on other molecules. [UniProt]

Images



ARG81956 Human Syndecan 3 ELISA Kit standard curve image

ARG81956 Human Syndecan 3 ELISA Kit results of a typical standard run with optical density reading at 450 nm.