

ARG81946 Mouse WIF1 ELISA Kit

Package: 96 wells
Store at: 4°C

Component

Cat. No.	Component Name	Package	Temp
ARG81946-001	Antibody-coated microplate	8 X 12 strips	4°C. Unused strips should be sealed tightly in the air-tight pouch.
ARG81946-002	Standard	2 X 10 ng/vial	4°C
ARG81946-003	Standard/Sample diluent	30 ml (Ready to use)	4°C
ARG81946-004	Antibody conjugate concentrate (100X)	1 vial (100 µl)	4°C
ARG81946-005	Antibody diluent buffer	12 ml (Ready to use)	4°C
ARG81946-006	HRP-Streptavidin concentrate (100X)	1 vial (100 µl)	4°C
ARG81946-007	HRP-Streptavidin diluent buffer	12 ml (Ready to use)	4°C
ARG81946-008	25X Wash buffer	20 ml	4°C
ARG81946-009	TMB substrate	10 ml (Ready to use)	4°C (Protect from light)
ARG81946-010	STOP solution	10 ml (Ready to use)	4°C
ARG81946-011	Plate sealer	4 strips	Room temperature

Summary

Product Description	ARG81946 Mouse WIF1 ELISA Kit is an Enzyme Immunoassay kit for the quantification of Mouse WIF1 in serum, plasma (heparin, EDTA) and cell culture supernatants.
Tested Reactivity	Ms
Tested Application	ELISA
Specificity	There is no detectable cross-reactivity with other relevant proteins.
Target Name	WIF1
Conjugation	HRP
Conjugation Note	Substrate: TMB and read at 450 nm.
Sensitivity	11.7 pg/ml
Sample Type	Serum, plasma (heparin, EDTA) and cell culture supernatants.
Standard Range	23.4 - 1500 pg/ml
Sample Volume	100 µl

Precision	Intra-Assay CV: 5.5%; Inter-Assay CV: 6.4%
Alternate Names	WIF-1; Wnt inhibitory factor 1

Application Instructions

Assay Time	~ 5 hours
------------	-----------

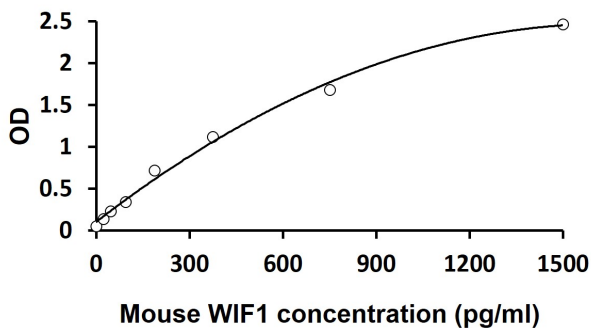
Properties

Form	96 well
Storage instruction	Store the kit at 2-8°C. Keep microplate wells sealed in a dry bag with desiccants. Do not expose test reagents to heat, sun or strong light during storage and usage. Please refer to the product user manual for detail temperatures of the components.
Note	For laboratory research only, not for drug, diagnostic or other use.

Bioinformation

Gene Symbol	WIF1
Gene Full Name	WNT inhibitory factor 1
Background	The protein encoded by this gene functions to inhibit WNT proteins, which are extracellular signaling molecules that play a role in embryonic development. This protein contains a WNT inhibitory factor (WIF) domain and five epidermal growth factor (EGF)-like domains, and is thought to be involved in mesoderm segmentation. This gene functions as a tumor suppressor gene, and has been found to be epigenetically silenced in various cancers. [provided by RefSeq, Jun 2010]
Function	Binds to WNT proteins and inhibits their activities. May be involved in mesoderm segmentation. [UniProt]
Highlight	Related products: WIF1 antibodies ; WIF1 ELISA Kits ; New ELISA data calculation tool: Simplify the ELISA analysis by GainData

Images



ARG81946 Mouse WIF1 ELISA Kit standard curve image

ARG81946 Mouse WIF1 ELISA Kit results of a typical standard run with optical density reading at 450 nm.