

ARG81876 Rat BTC / Betacellulin ELISA Kit

Package: 96 wells
Store at: 4°C

Component

Cat. No.	Component Name	Package	Temp
ARG81876-001	Antibody-coated microplate	8 X 12 strips	4°C. Unused strips should be sealed tightly in the air-tight pouch.
ARG81876-002	Standard	2 X 10 ng/vial	4°C
ARG81876-003	Standard/Sample diluent	30 ml (Ready to use)	4°C
ARG81876-004	Antibody conjugate concentrate (100X)	1 vial (100 µl)	4°C
ARG81876-005	Antibody diluent buffer	12 ml (Ready to use)	4°C
ARG81876-006	HRP-Streptavidin concentrate (100X)	1 vial (100 µl)	4°C
ARG81876-007	HRP-Streptavidin diluent buffer	12 ml (Ready to use)	4°C
ARG81876-008	25X Wash buffer	20 ml	4°C
ARG81876-009	TMB substrate	10 ml (Ready to use)	4°C (Protect from light)
ARG81876-010	STOP solution	10 ml (Ready to use)	4°C
ARG81876-011	Plate sealer	4 strips	Room temperature

Summary

Product Description	ARG81876 Rat BTC / Betacellulin ELISA Kit is an Enzyme Immunoassay kit for the quantification of Rat BTC / Betacellulin in serum, plasma (heparin, EDTA) and cell culture supernatants.
Tested Reactivity	Rat
Tested Application	ELISA
Specificity	There is no detectable cross-reactivity with other relevant proteins.
Target Name	BTC / Betacellulin
Conjugation	HRP
Conjugation Note	Substrate: TMB and read at 450 nm.
Sensitivity	3.9 pg/ml
Sample Type	Serum, plasma (heparin, EDTA) and cell culture supernatants.
Standard Range	7.8 - 500 pg/ml
Sample Volume	100 µl

Precision	Intra-Assay CV: 5.4%; Inter-Assay CV: 6.6%
Alternate Names	Probetacellulin; BTC

Application Instructions

Assay Time	~ 5 hours
------------	-----------

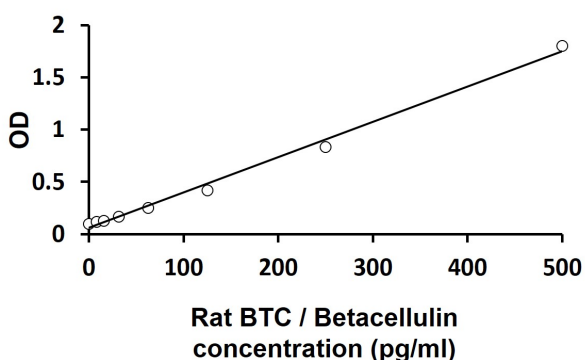
Properties

Form	96 well
Storage instruction	Store the kit at 2-8°C. Keep microplate wells sealed in a dry bag with desiccants. Do not expose test reagents to heat, sun or strong light during storage and usage. Please refer to the product user manual for detail temperatures of the components.
Note	For laboratory research only, not for drug, diagnostic or other use.

Bioinformation

Gene Symbol	BTC
Gene Full Name	betacellulin
Background	The protein encoded by this gene is a member of the EGF family of growth factors. It is synthesized primarily as a transmembrane precursor, which is then processed to mature molecule by proteolytic events. This protein is a ligand for the EGF receptor. [provided by RefSeq, Jul 2008]
Function	Growth factor that binds to EGFR, ERBB4 and other EGF receptor family members. Potent mitogen for retinal pigment epithelial cells and vascular smooth muscle cells. [UniProt]
Highlight	Related products: Betacellulin antibodies ; Betacellulin ELISA Kits ; New ELISA data calculation tool: Simplify the ELISA analysis by GainData

Images



ARG81876 Rat BTC / Betacellulin ELISA Kit standard curve image

ARG81876 Rat BTC / Betacellulin ELISA Kit results of a typical standard run with optical density reading at 450 nm.